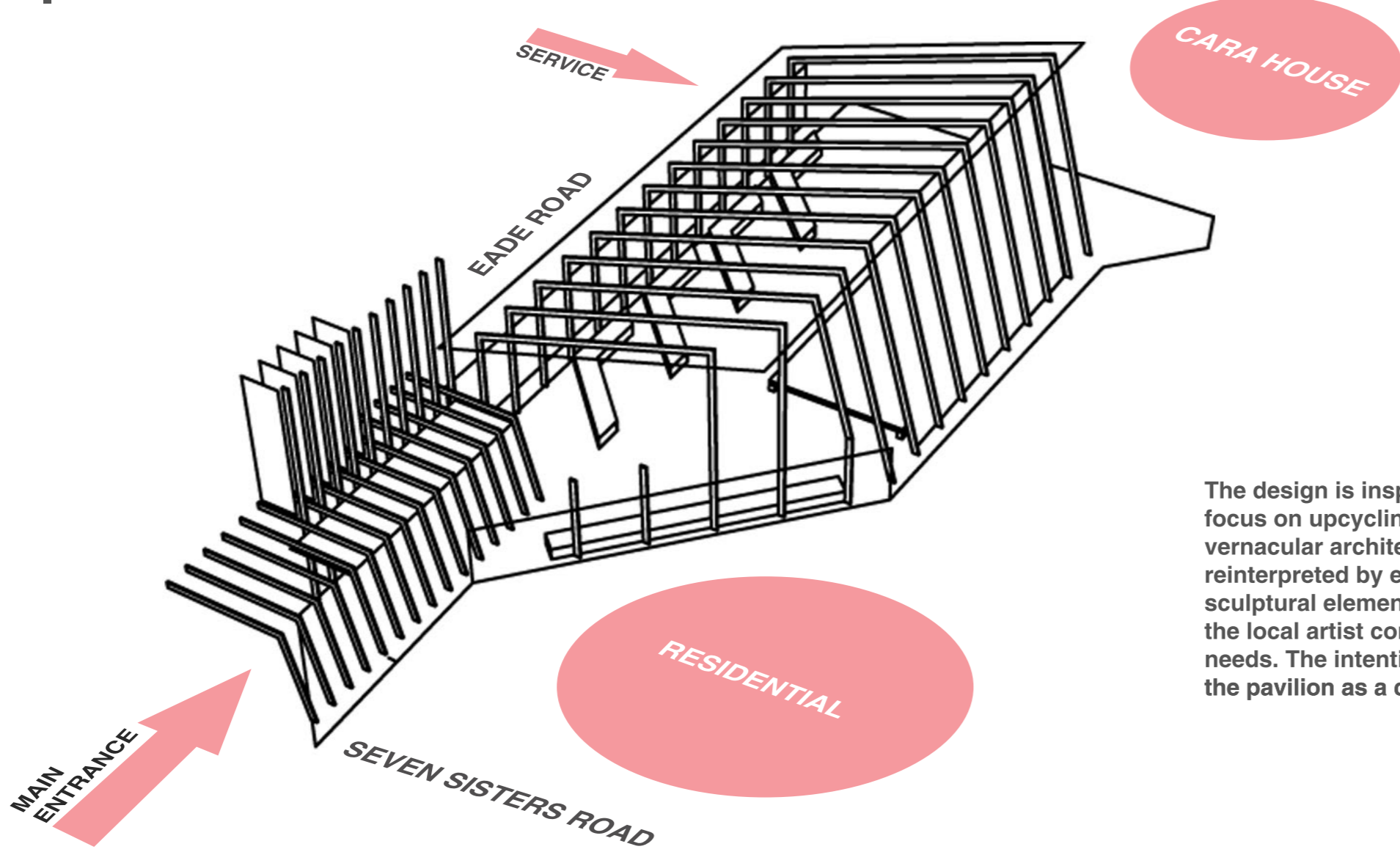


COMMUNITY CANVAS



The design is inspired by Harringay's self build aesthetic with a focus on upcycling of materials to generate a creative, colourful vernacular architecture. The area's warehouse typology is also reinterpreted by expressing the pavilion's structural skeleton as a sculptural element. This structure creates an open air shell that the local artist community is free to organize according to their needs. The intention is to empower the local community to use the pavilion as a canvas to express themselves.



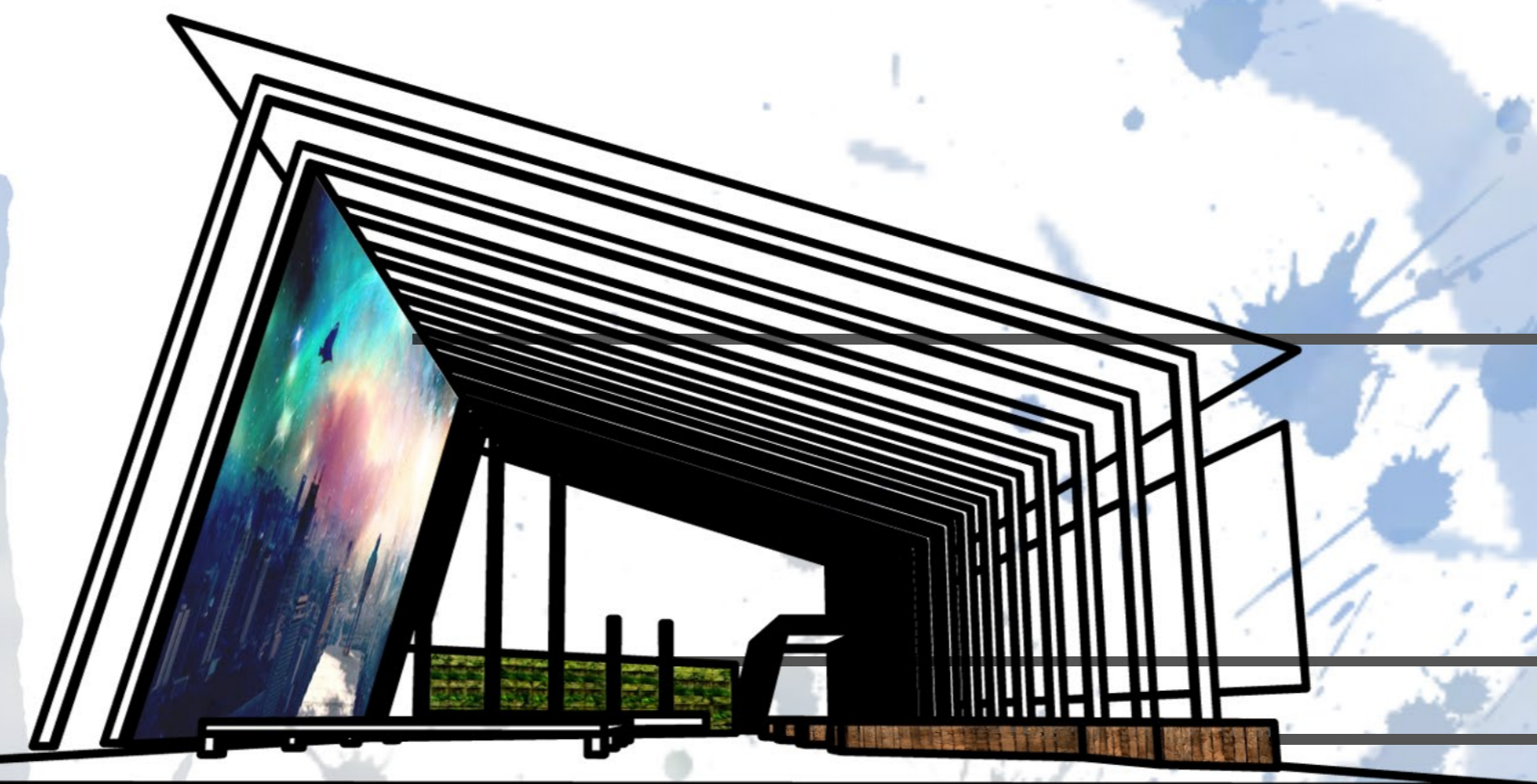
PVC COATED POLYESTER
flexible division/screen for projections



UPCYCLED PLANTERS
local scrap metal turned into planters



PALLET FURNITURE
throwback to pallet paradise



POLYCARBONATE ROOF SHEETING
translucent and can be ambiantly lit at night



PUBLIC ART WALL
local artists can leave their mark on the pavilion



RECLAIMED TIMBER FRAME
old railway sleepers or other salvaged timber