

# H LONGWAT

## PAVILION

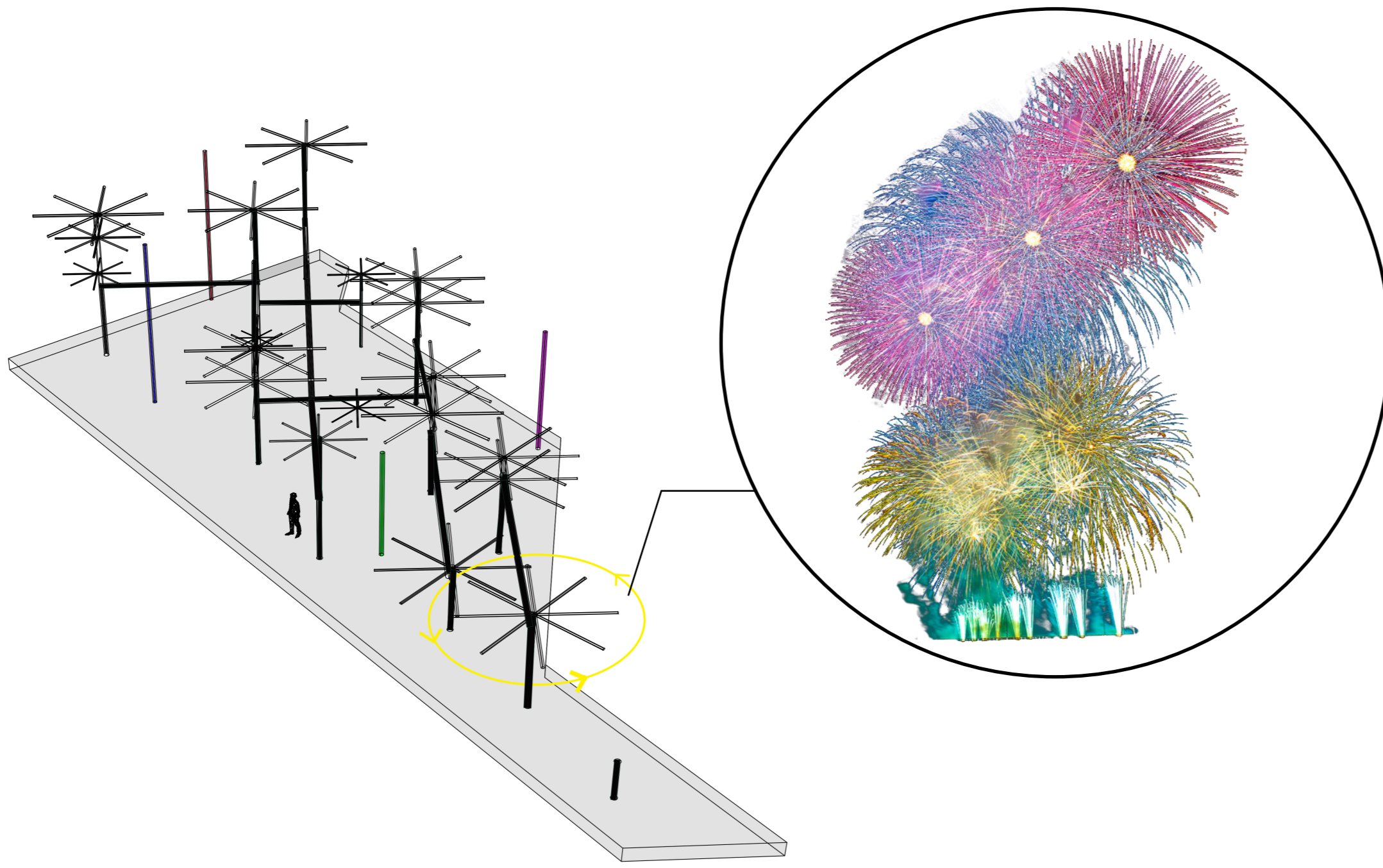
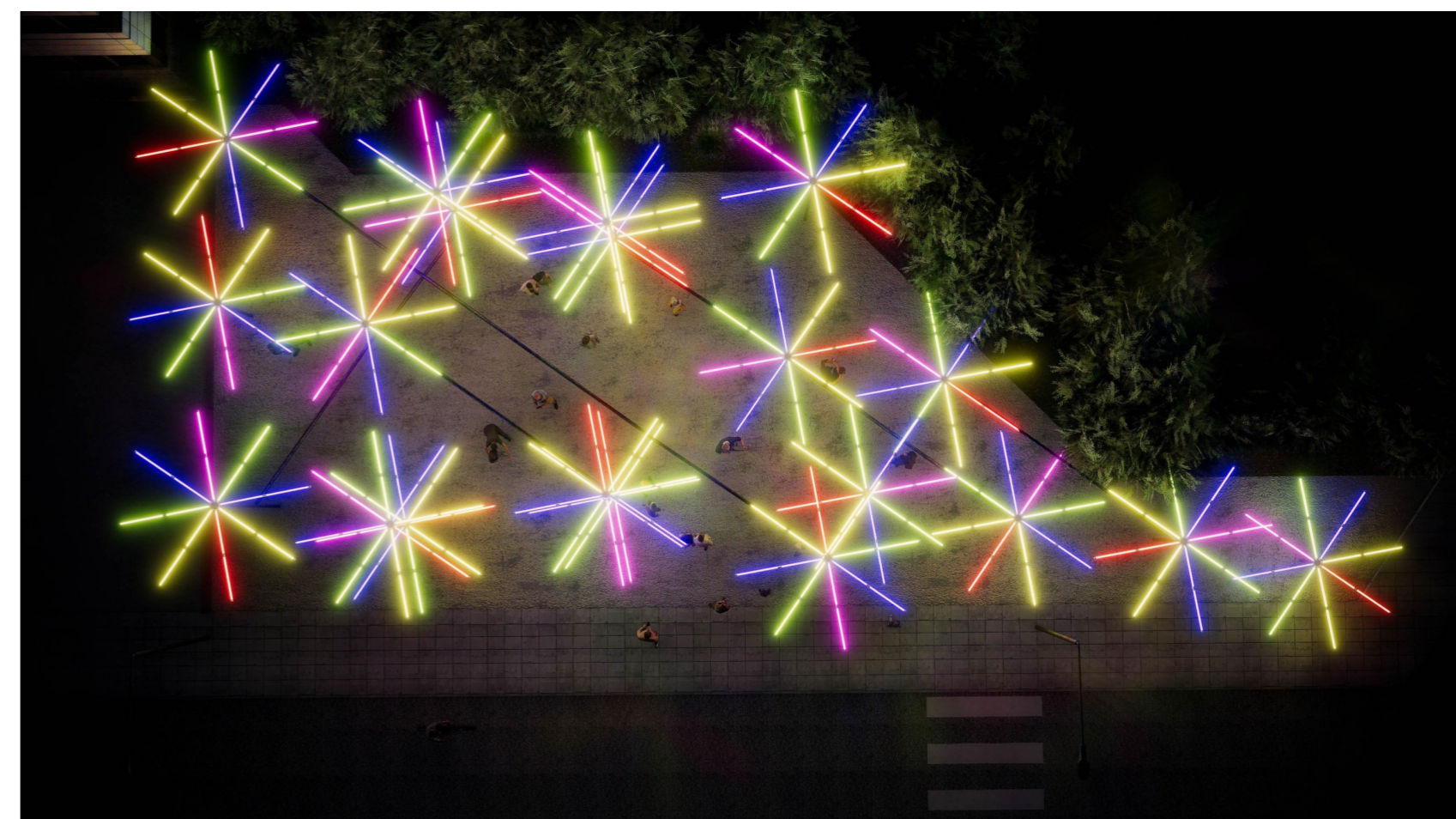


### H LONG WAT PAVILION

Inspired by the decoration of the colourful lightings used in temple fairs, ceremonies and festivals in Thailand. Especially vivid colours and several patterns of a firework explosion.

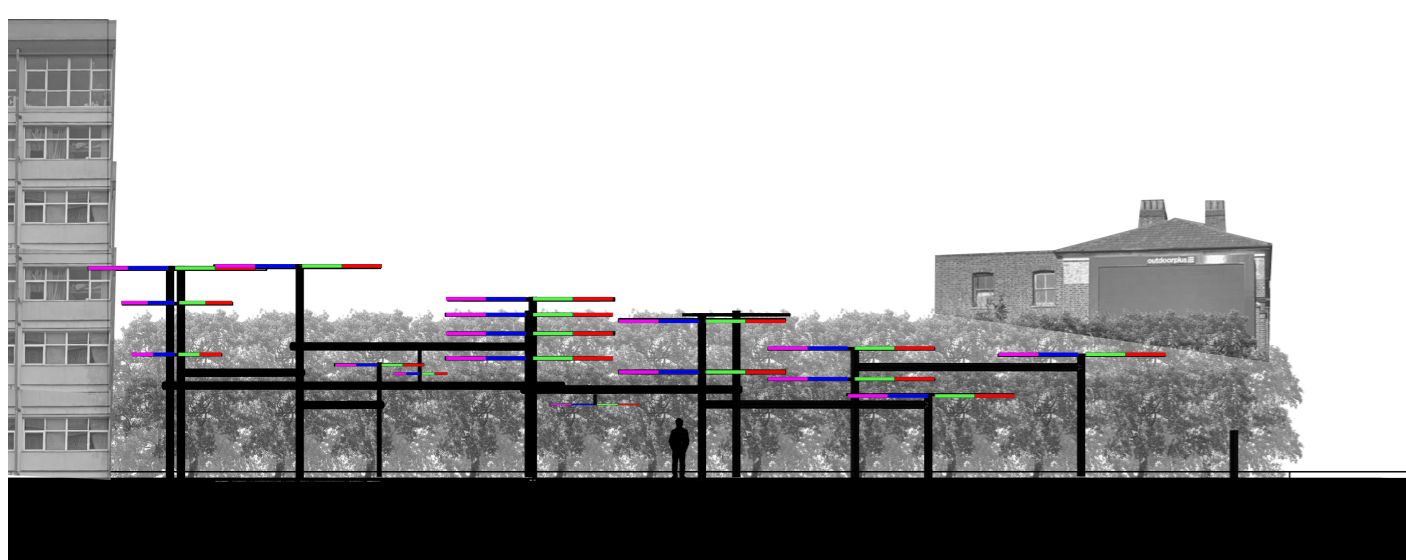
Instead of using the fireworks which seems to waste the resources and to cause pretty loud noises and annoying smoke. So they use the colourful flashing and rotating lightings in several patterns of firework explosions, which is placing in different sizes, shapes and levels, to decorate the festivals.

Lit up by the flashing and rotating vivid lights, any mundane, unused or even deserted areas can be transformed into a rather special places where lives and communities are being celebrated.

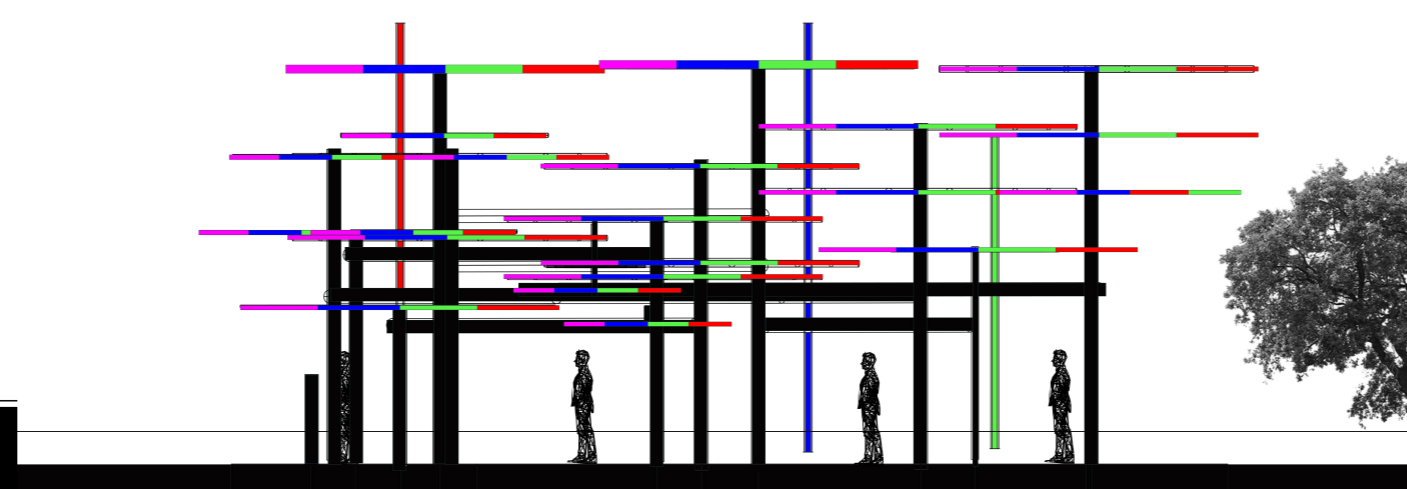


#### MATERIAL

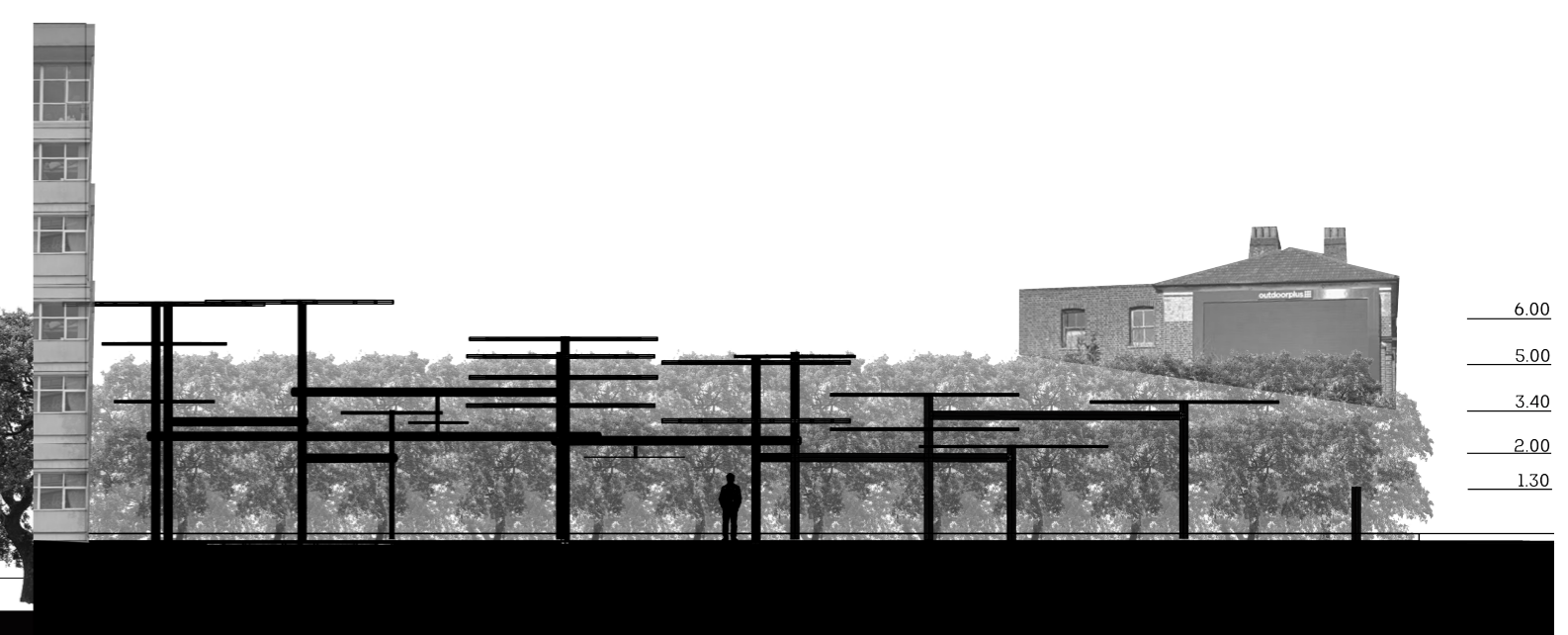
-   
 Neon light / waterproof model (18 watts),  
3 episodes
-   
 2 inch round black steel pipe  
1.2 mm x 23
-   
 power cable 300 meter
-   
 Revolving light x 13



ELEVATION 1



ELEVATION 2



SECTION