

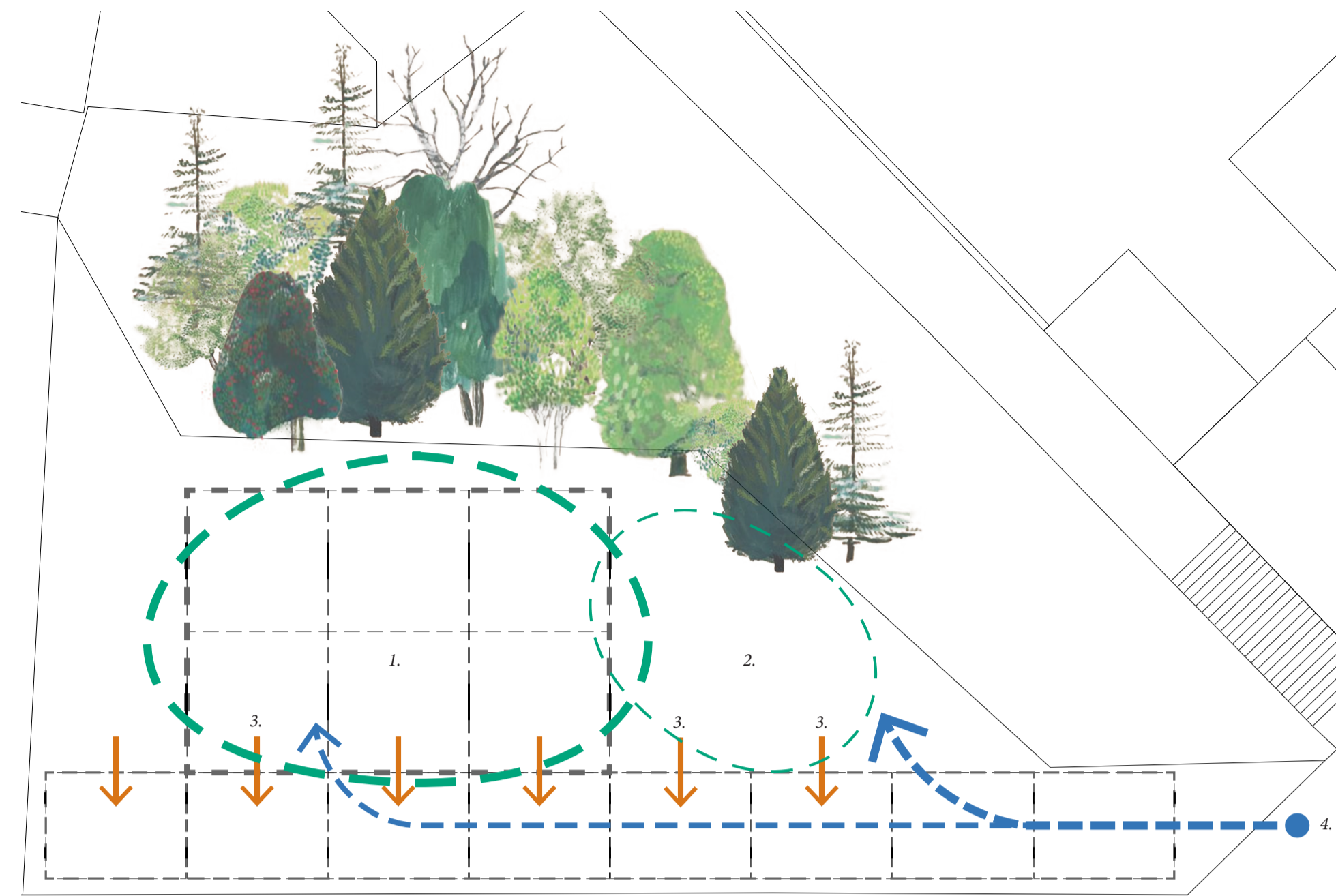
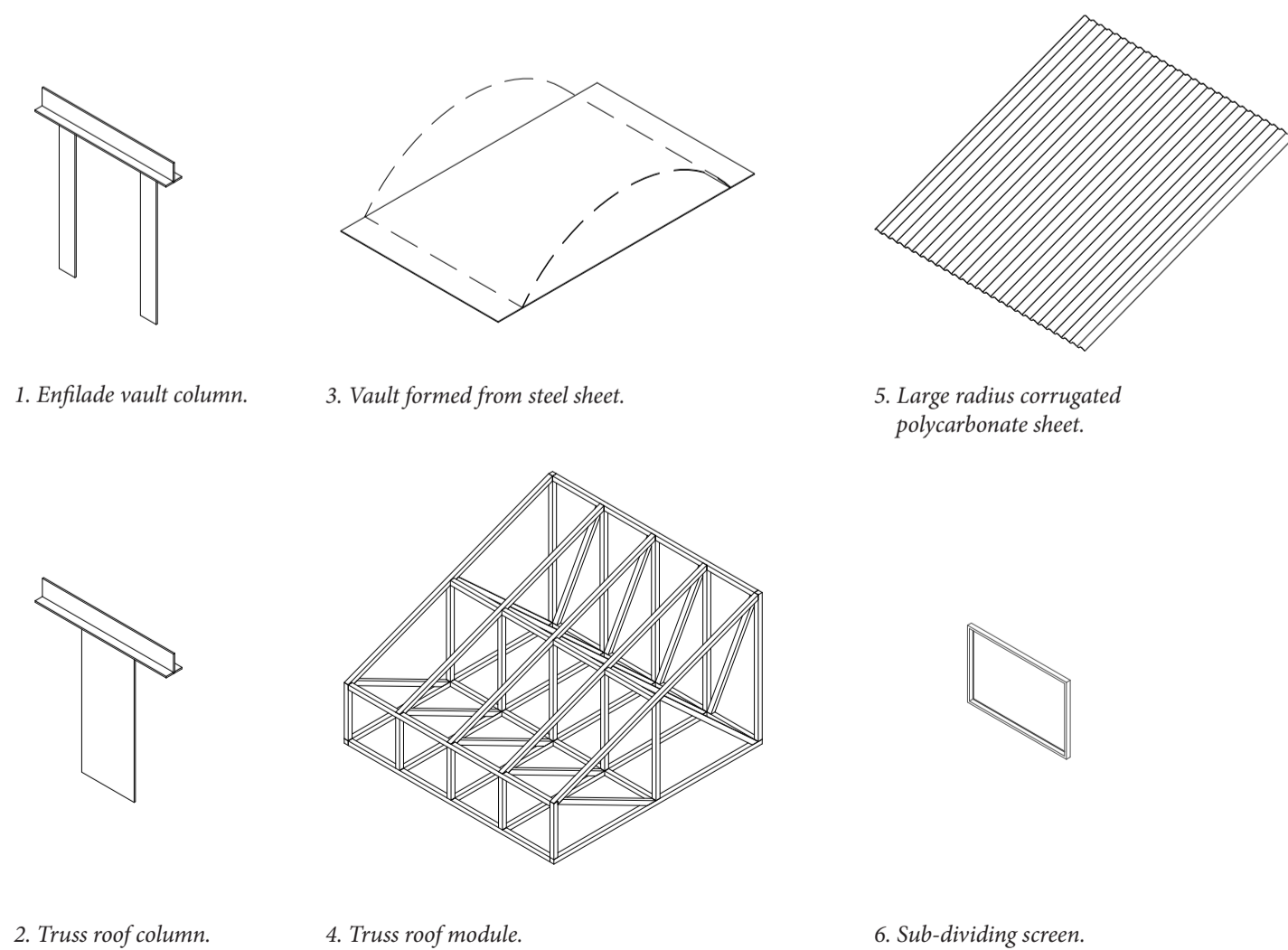


**Harringay Vaults**  
Niall Anderson

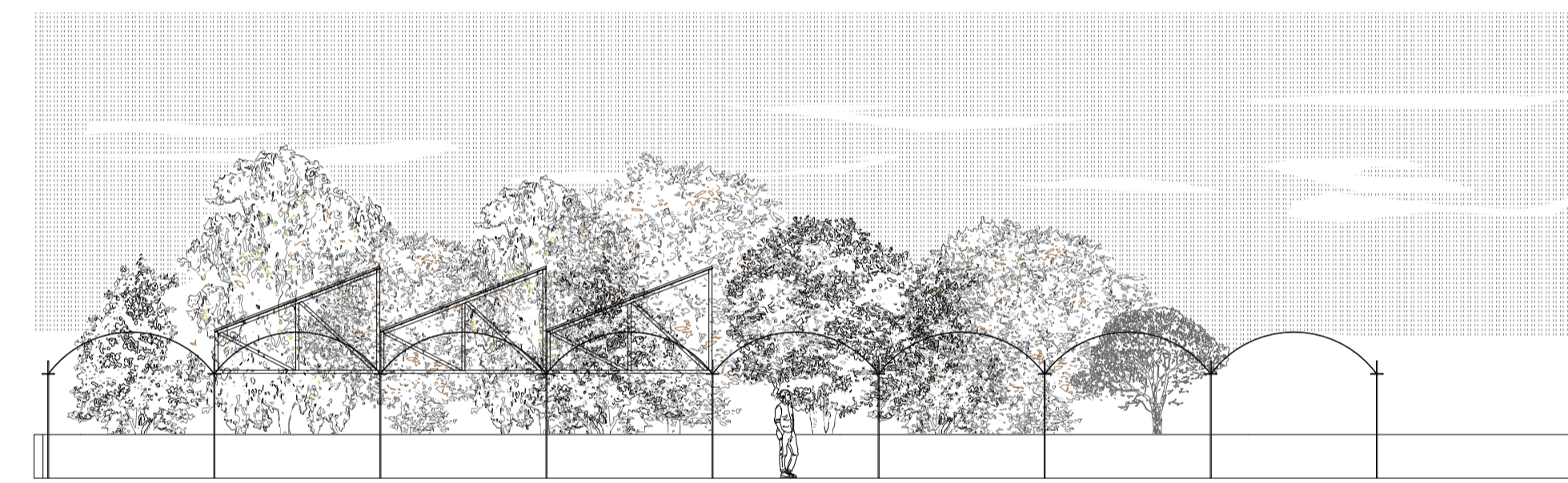
The pavilion has been designed as a multi-functional gathering space for the Harringay community. It creates a series of public spaces in miniature: an arcade or enfilade which forms the entrance and creates a thick edge to the site, a courtyard held between the pavilion elements and the site boundary, and an assembly space defined by the timber roof.

The definition of each of these spaces is intentionally loose and multiplicitous. The cantilevered corners of the timber roofs open the principal covered space out to the courtyard and the vaults. The form of each of the two types of steel column is directional in opposing ways. The columns which hold the vaults have their support split into two legs creating a transversal linear space, or series of spaces, which extend from the entrance along Eade Road and can be read as an enfilade or arcade. When subdivided with translucent screens, the smaller scale of the individual steel vaults could accommodate market stalls or small groups of people whilst allowing light to filter through. The columns supporting the timber roofs have a single central support which orients space parallel to the column. This focuses the gathering space towards the trees at the rear of the site which will act as a backdrop to performances.

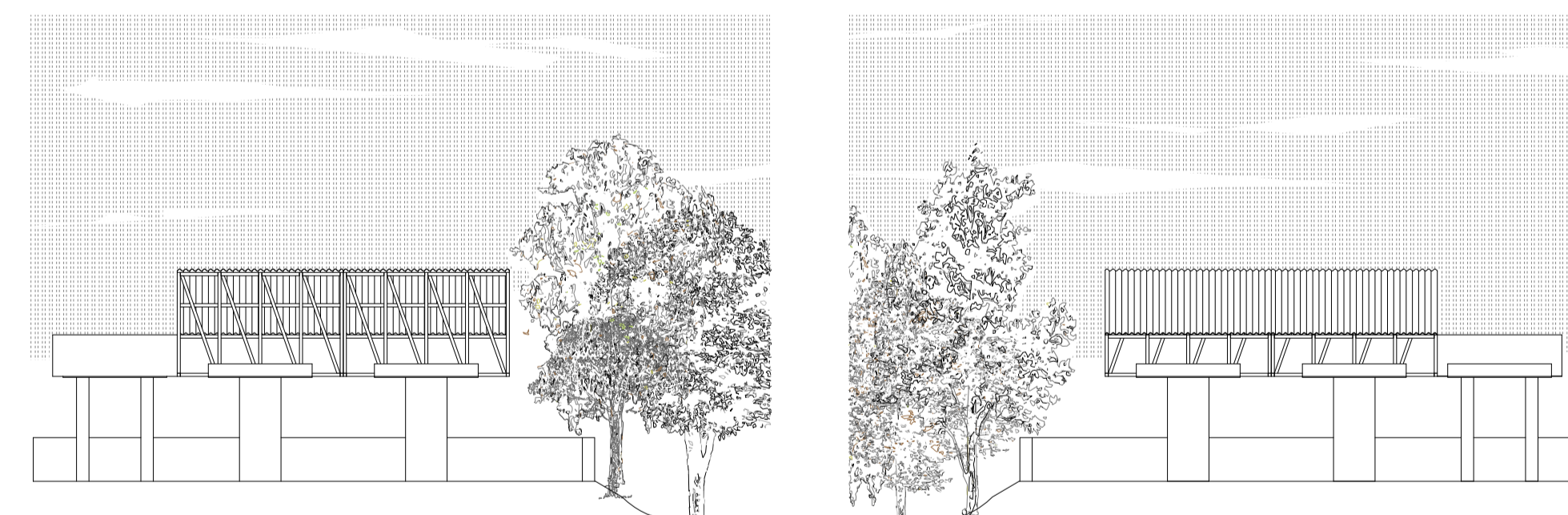
The vaulted edge is a visually permeable threshold, separating the site from the traffic on Seven Sisters Rd without closing the pavilion off to its context, with views through to activity beyond inviting the passing community in. The existing fence plays into this, providing a degree of enclosure whilst remaining a neutral component. Maintaining a visual connection ensures the pavilion will feel inclusive. It will be an informal, flexible space which can accommodate various and divergent community uses.



- 1. Principal covered space, orientated towards the trees which will enclose the space and offer a backdrop to performances.
- 2. Courtyard.
- 3. Possibility to create ante-spaces by sub-dividing the enfilade.
- 4. Entrance enfilade.



South elevation view from Eade Rd.



East elevation.

West elevation.



The two types of steel columns will be erected, forming the framework for the space.

The vaults will be raised. Flexible steel sheets are held between enfilade columns.

The self-supporting truss roof modules are supported at opposing edges.



The truss columns orient space across the site towards the trees.



Repeated roof forms reference the sawtooth warehouse roofs but remake these as a series of timber trapezoidal prisms, held aloft to create a space to gather below.



The corners of the trussed roofs cantilever from the centrally supported columns. The vaulted edge can be used as an extended entrance enfilade or subdivided to form individual vaulted spaces.