

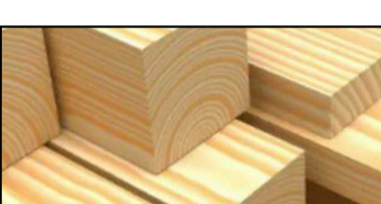

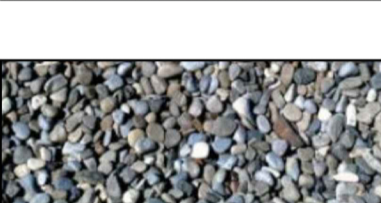
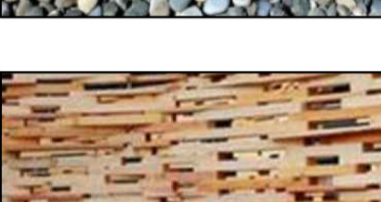


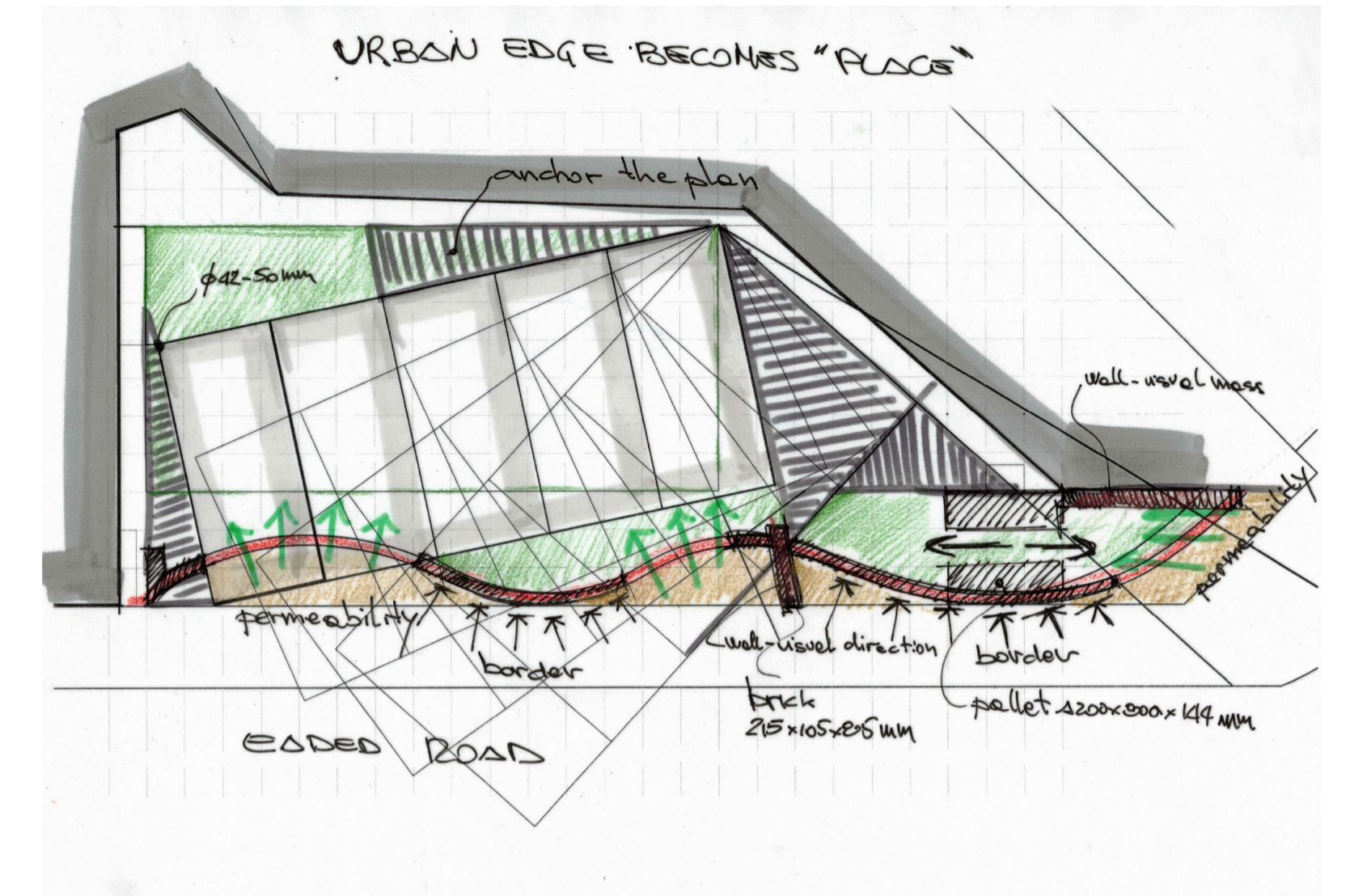
TOTTENHAM PAVILION

CONCEPT TITLE:
PALLET 1200X800X144

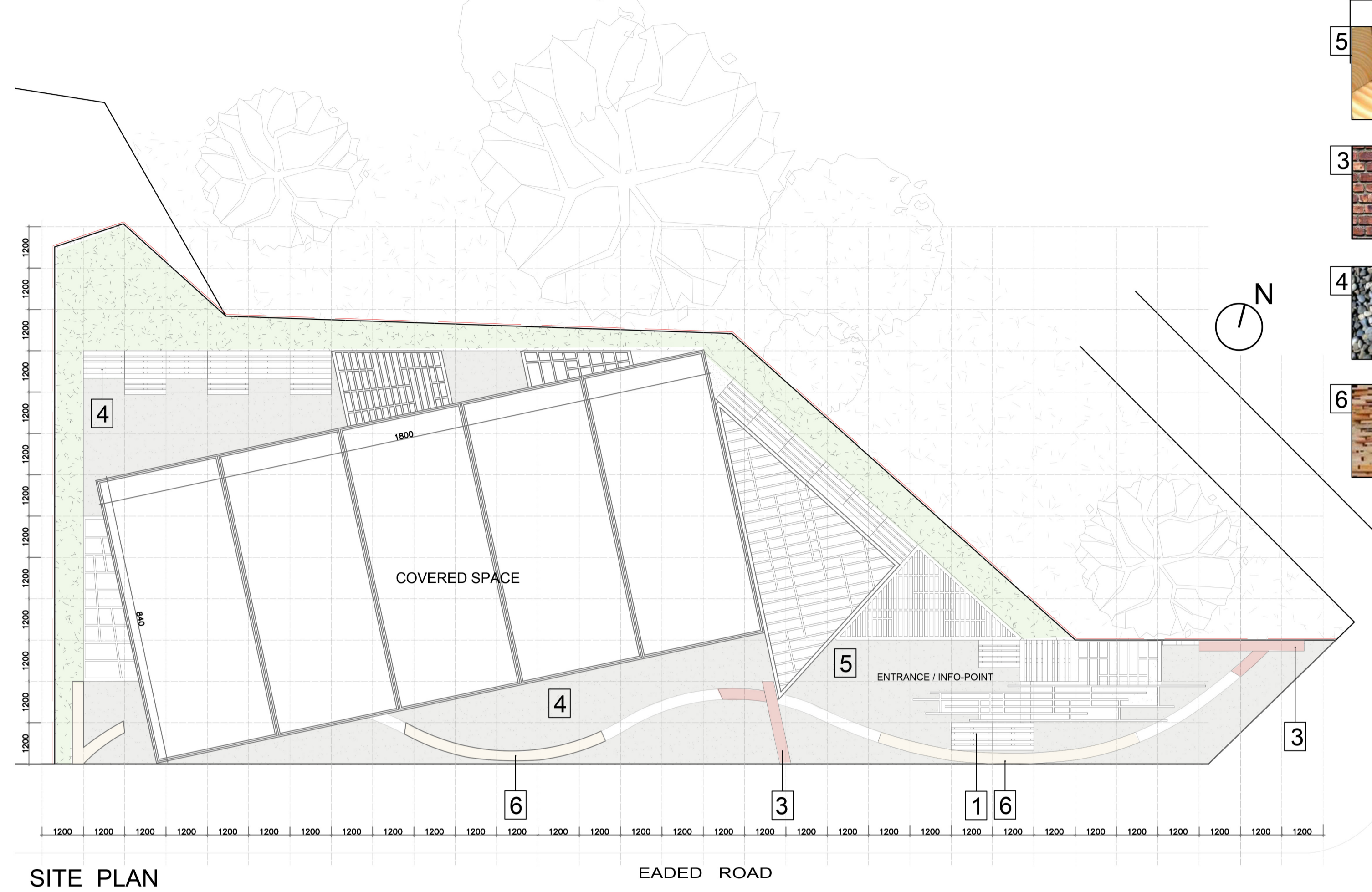
COMPETITOR: **GAETANO LETO - ARCHITETTO**
 VIA PACEM IN TERRIS, 8
 87012 CASTROVILLARI (CS) - ITALIA
 Phone: +39 098121251 - +39 3939126141
 mail: leto.gaetano@libero.it
 www.cortileinterno.it

THE MATERIALS TO REALIZE IT

- 1  **PALLET - 1200x800x144mm**
Recycled elements with which realize seats and portal
- 2  **INDUSTRIAL CONCRETE FLOOR**
Floor to be made of hand-polished concrete
- 5  **WOODEN STRIPS**
Pergolas and elements that "bind" the geometry of the plant
- 3  **BRICK - 215x105x85mm**
Wall - creates a visual direction, creates a visual mass
- 4  **GRAVEL**
Tactile and sound pattern
- 6  **WASTE TIMBER**
Recovery of wooden strips, studded to form a wall. Studied by BAG - Beyond Architecture Group - Rome



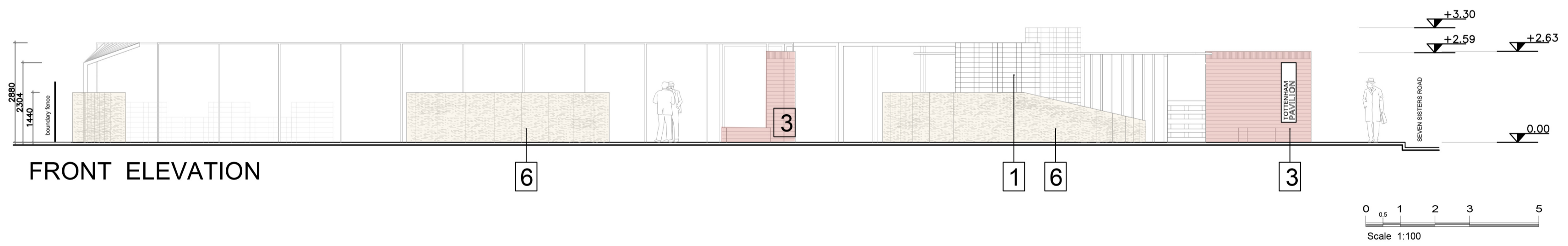
SIDE ELEVATION



SITE PLAN

SEVEN SISTERS ROAD

SIDE ELEVATION



FRONT ELEVATION

EXAMPLES OF ORGANIZATION OF THE COVERED SPACE

