

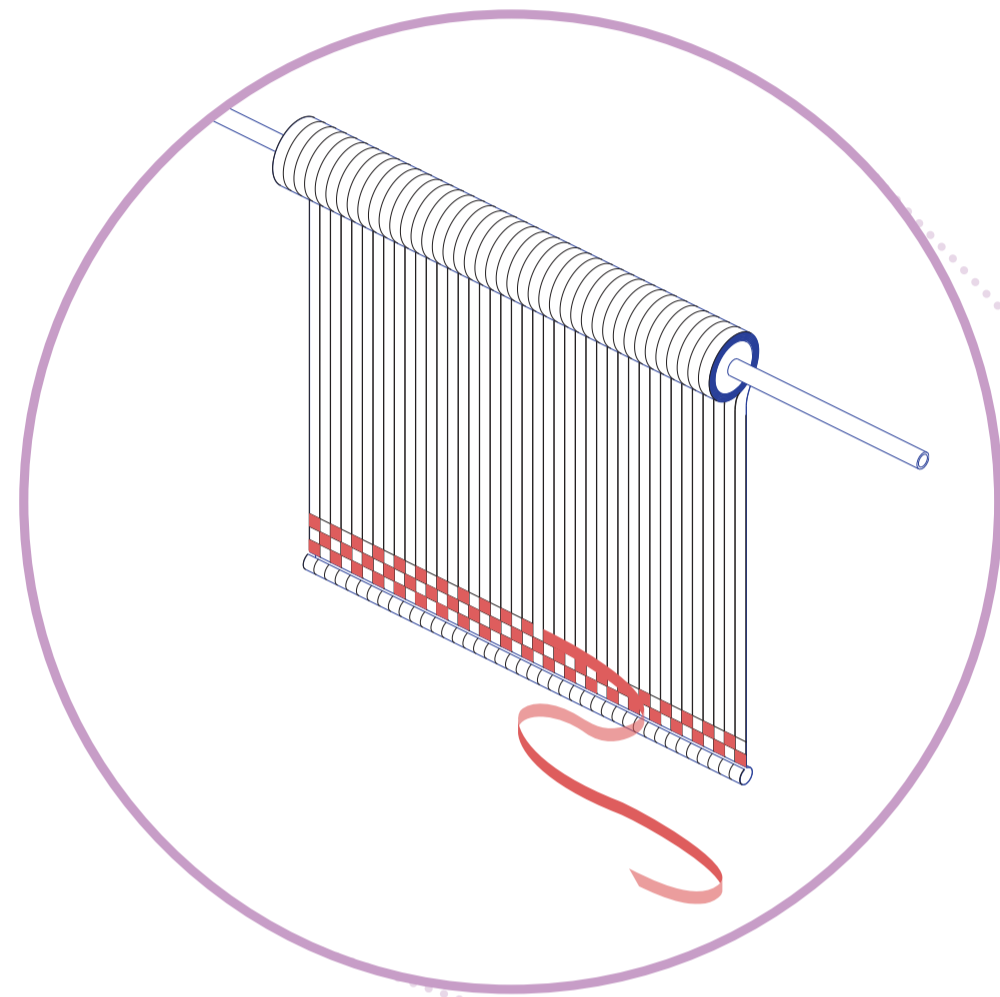
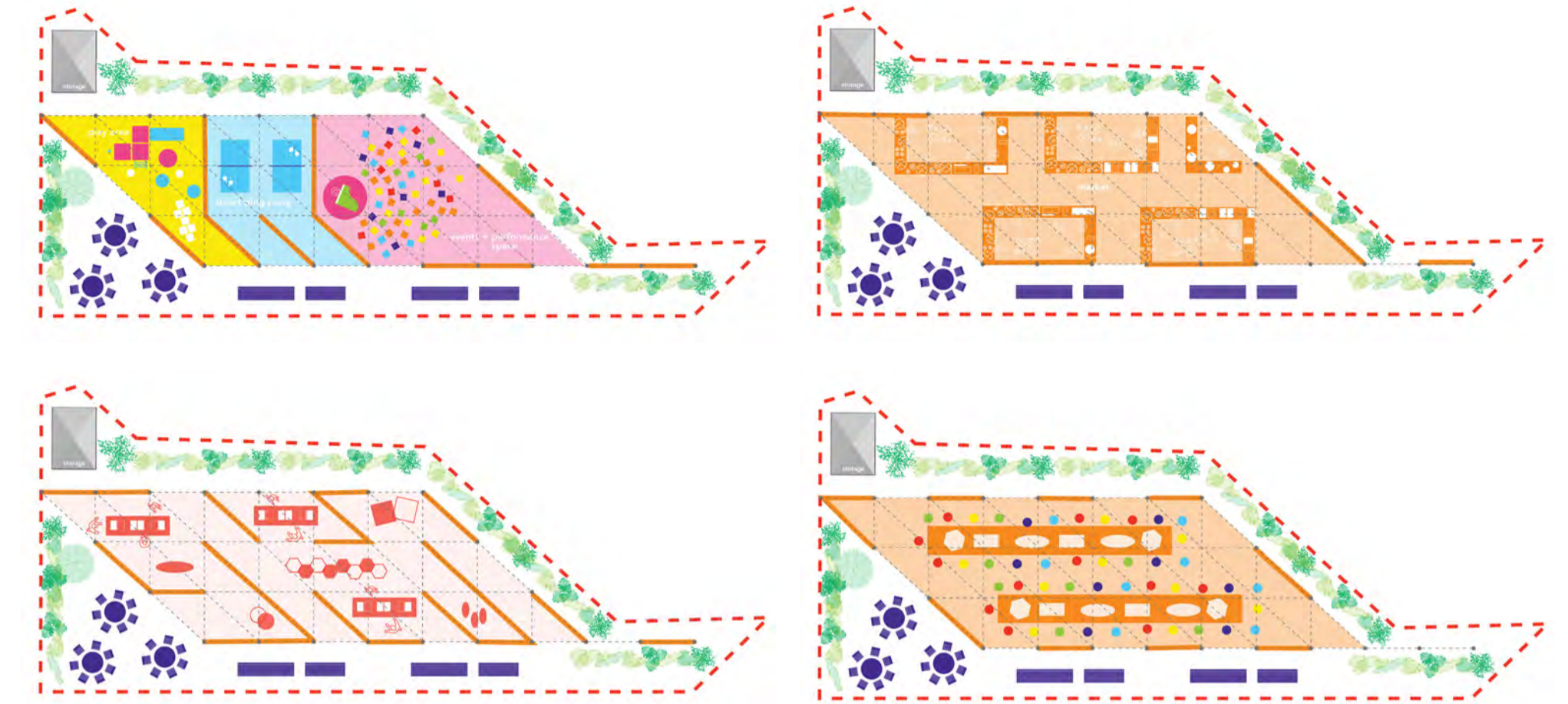
THE BOLT STORE

The Bolt Store is a celebration of the warehouse's community spirit. The tectonics interweave the rich and diverse culture to become the ultimate form of liveable social artwork, showcasing the diverse fabric of the area and opposing gentrification. Constructed as a 'kit of parts': a prefabricated framework, retractable bolts of woven art to create walls and modular furniture, the space can be moved and assembled by the community at will. It looks at new ways of inhabiting industrialized architecture and inspire you by an alternative way of making shared spaces. Virtually every part of the structure is variable to meet the requirements of events or become an explorable inhabitable immersive artwork. As if a giant wardrobe full of tapestries leading into the Narnia of the warehouse district.

- The Pavilion will be designed by locals
- The Pavilion will be made by locals and produced locally
- The Pavilion will host all kinds of events organized, run by the people of Harringay
- There should not be a sole author
- We are not the artist or architects, but designers of a strategic framework to co-author a new civic pavilion
- We offer our expertise as consultants, agents, facilitators and coordinators, but we will let locals have the final say!

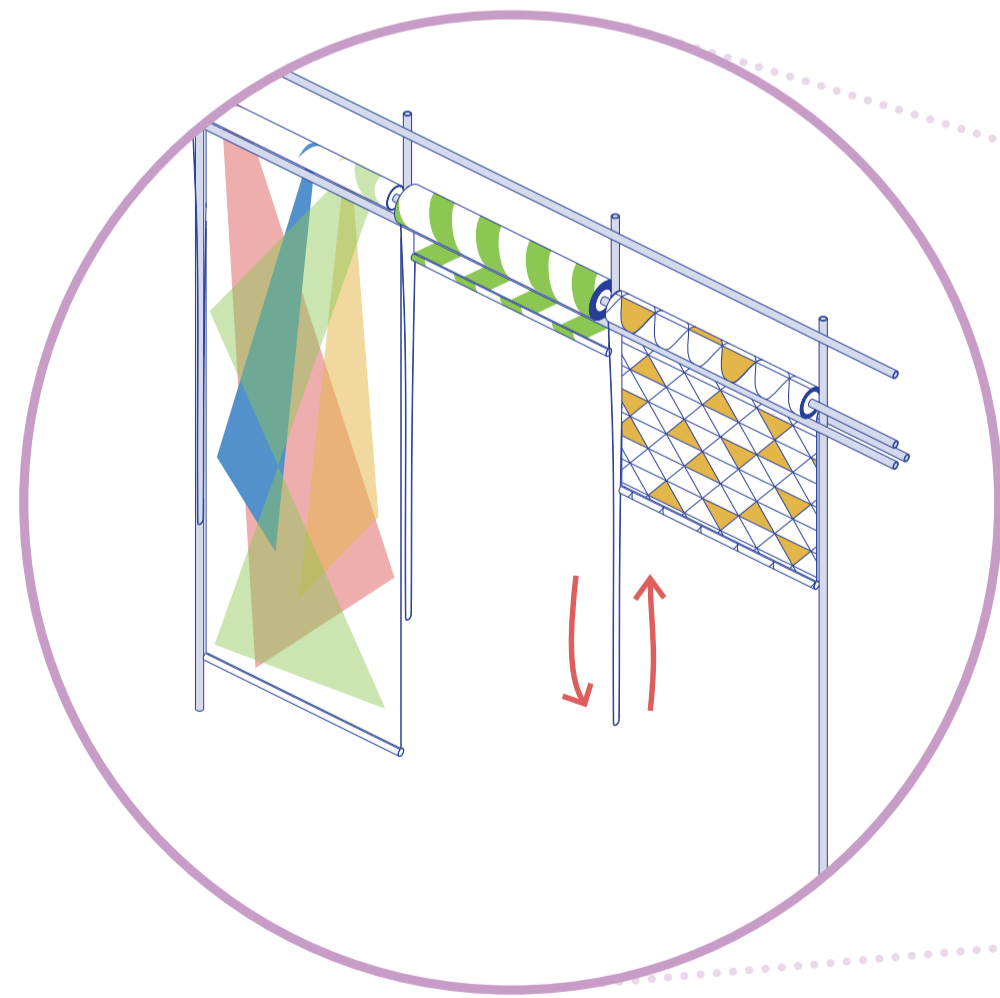
Space Frame -Variable Floor Plan Iterations During Occupancy

- Space frame architecture found in warehouses
- Large column free open plan space
- blank canvas for the tapestries
- people, events and their collective creative output bring to the pavilion to life
- Flexibility of design allows it to translate between sites and adapt to new landscapes for future reuse



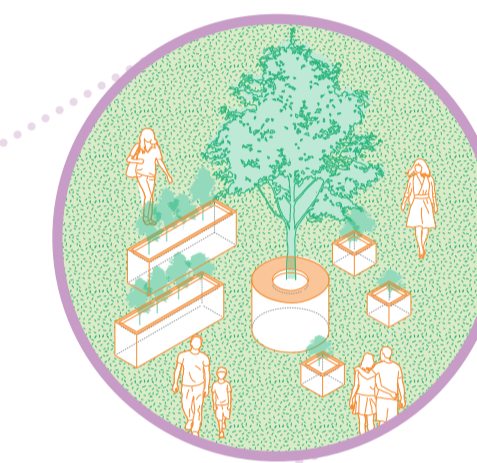
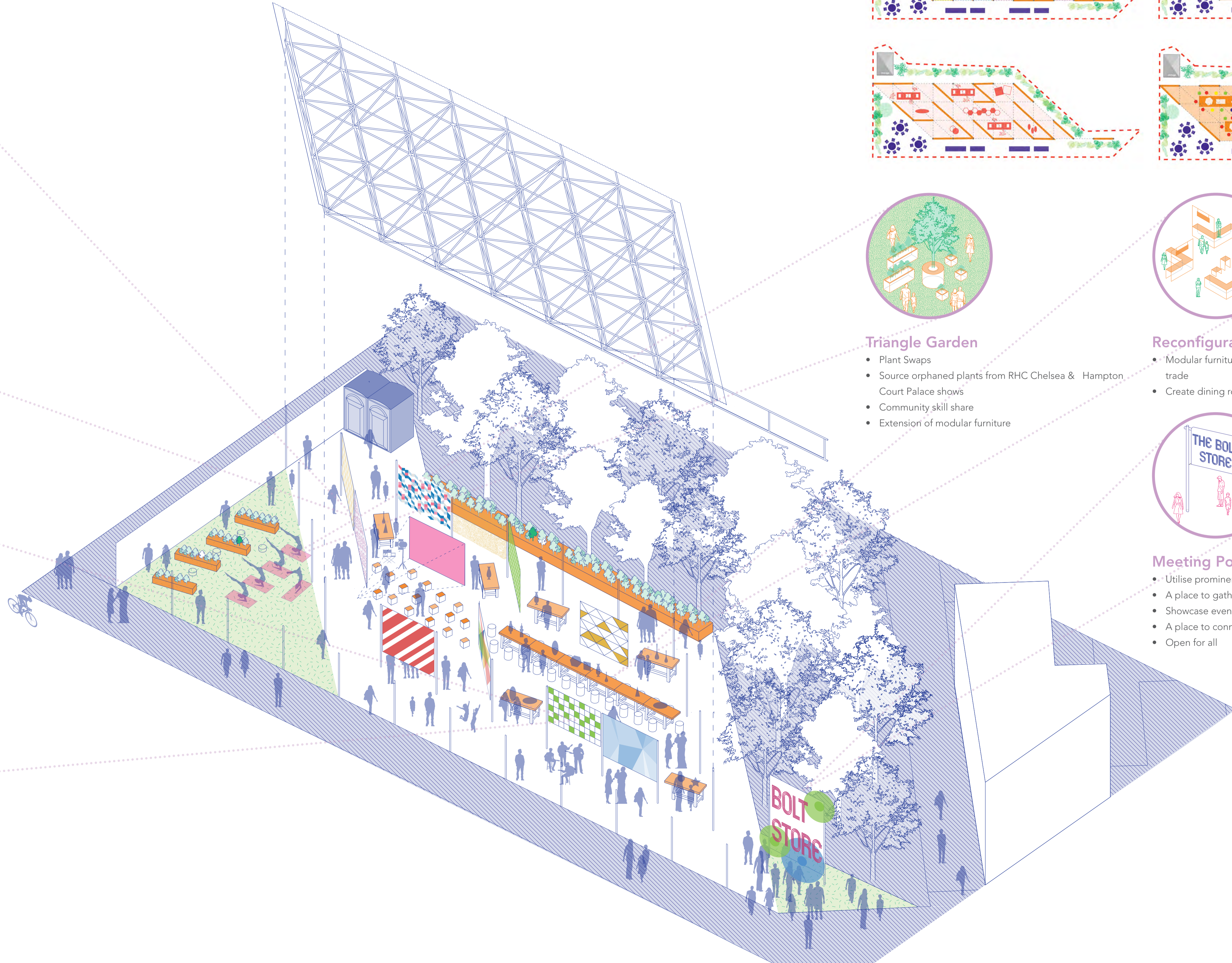
Rag Trade Tapestries

- Rollers contain the warp, weft introduced by community workshops with local residents and artists
- A sculptural graphic of the people, styles and cultures that make Harringay



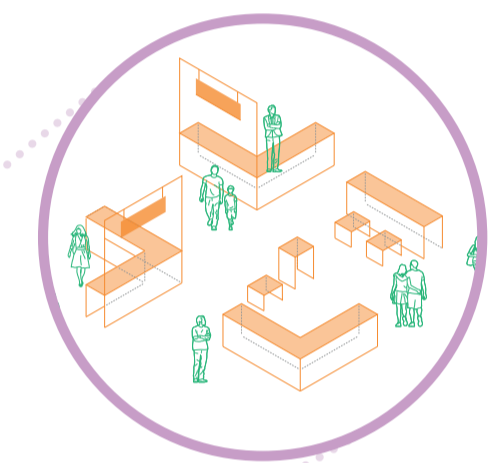
Reconfigurable Space

- Unprecedented control
- Raising and lowering woven tapestries as a system of dividers
- Spaces for local festivals & common interest groups
- Spaces for connecting communities within the area



Triangle Garden

- Plant Swaps
- Source orphaned plants from RHC Chelsea & Hampton Court Palace shows
- Community skill share
- Extension of modular furniture



Reconfigurable Modular Furniture

- Modular furniture referencing the 'Cutting table' of the rag trade
- Create dining rooms, classrooms, stages, catwalks & more



Meeting Point

- Utilise prominent location
- A place to gather communities
- Showcase events and creative outlets
- A place to connect and share
- Open for all