

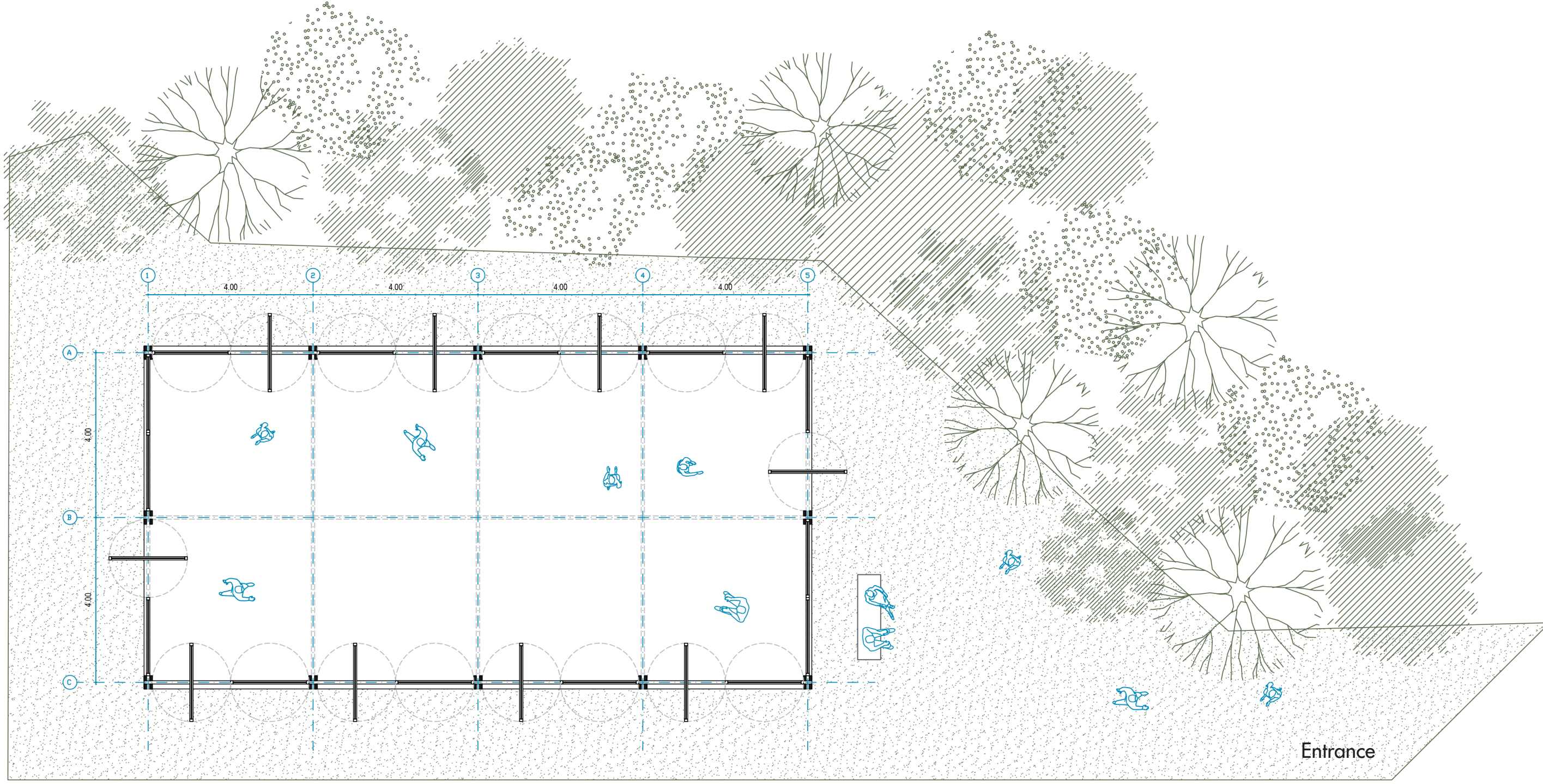
The Community Pavilion



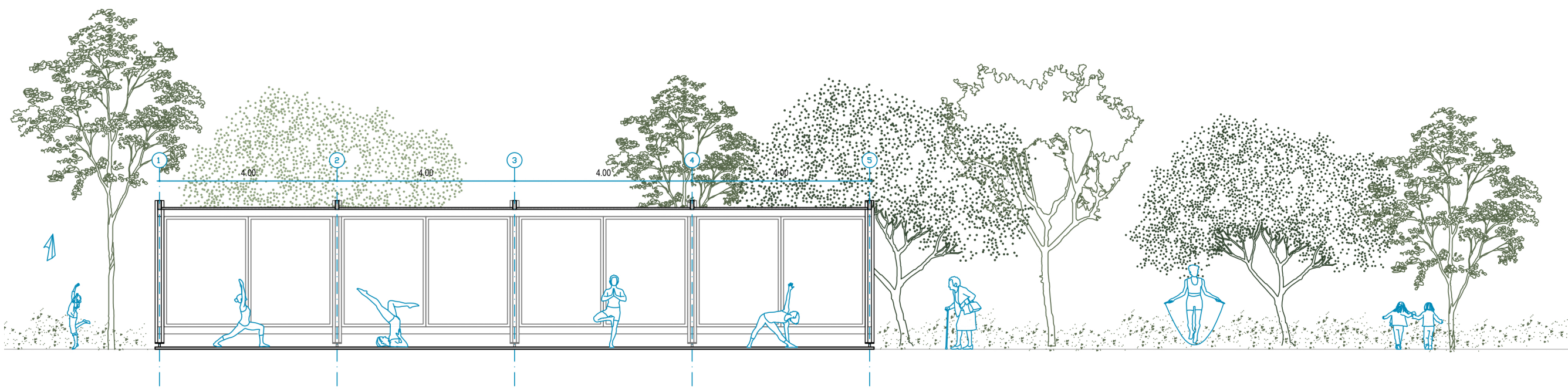
Front View: Panels open



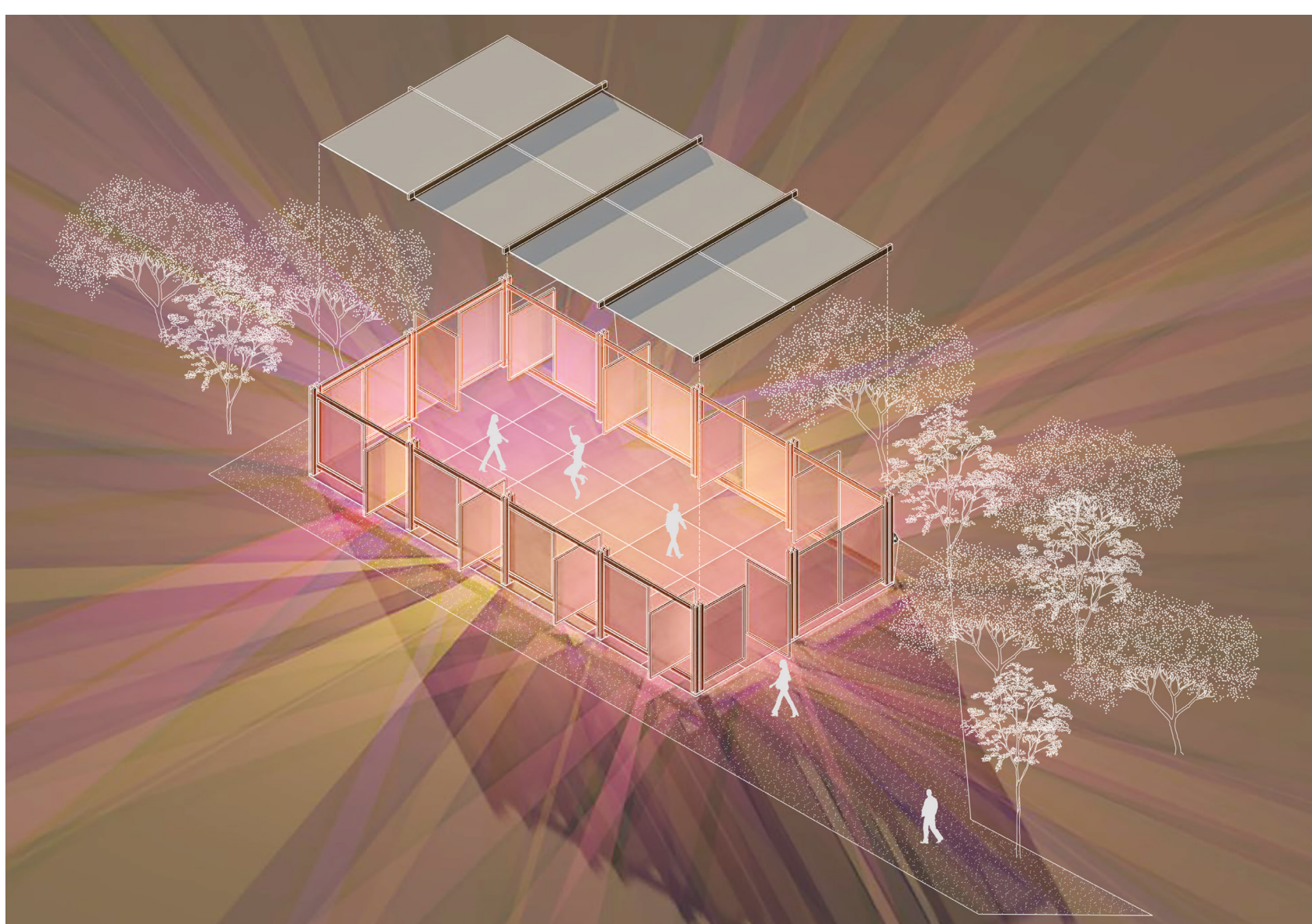
Front View: Panels closed



Plan | Scale 1:100



Section | Scale 1:100



Isometric Perspective: Pavilion illuminated by colorful lights

The main concept of the project is to create a pavilion that can be flexible to different uses and that allows the population to modify it according to their needs. The design provides a space where artists and local residents can contribute to the development of the pavilion.

The building presents one single room, without internal barriers, making the space more versatile and capable of hosting different activities.

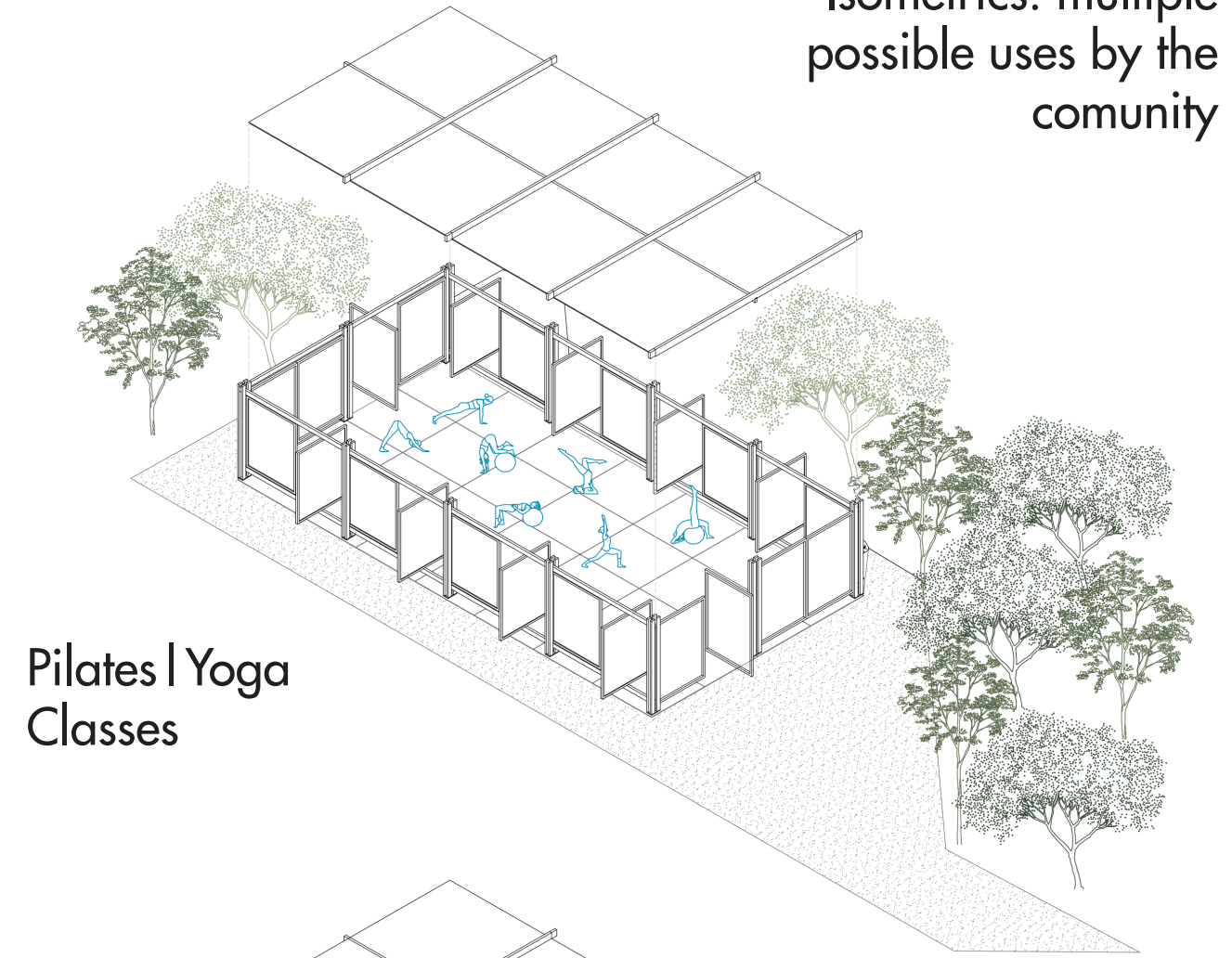
The Pavilion has pivoting panels which allow visitors to shape the building according to their needs, as well as to control the amount of light and visual permeability within the building. However, even with all the panels closed, it is possible to visualize shapes, colors and movements from inside the building, given that the panels are made of translucent material. This enables a constant communication and interaction with the external space.

The atmosphere of the Pavilion can be changed according to the time of the day or type of activity. At night, the interior of the building can be lit with colored lamps, creating spaces for parties, presentations or community gatherings. The colorful lights, going through the polycarbonate panels, transform the building at night, resembling a lantern. Its lights bring life and color to the pavilion and the space around it.

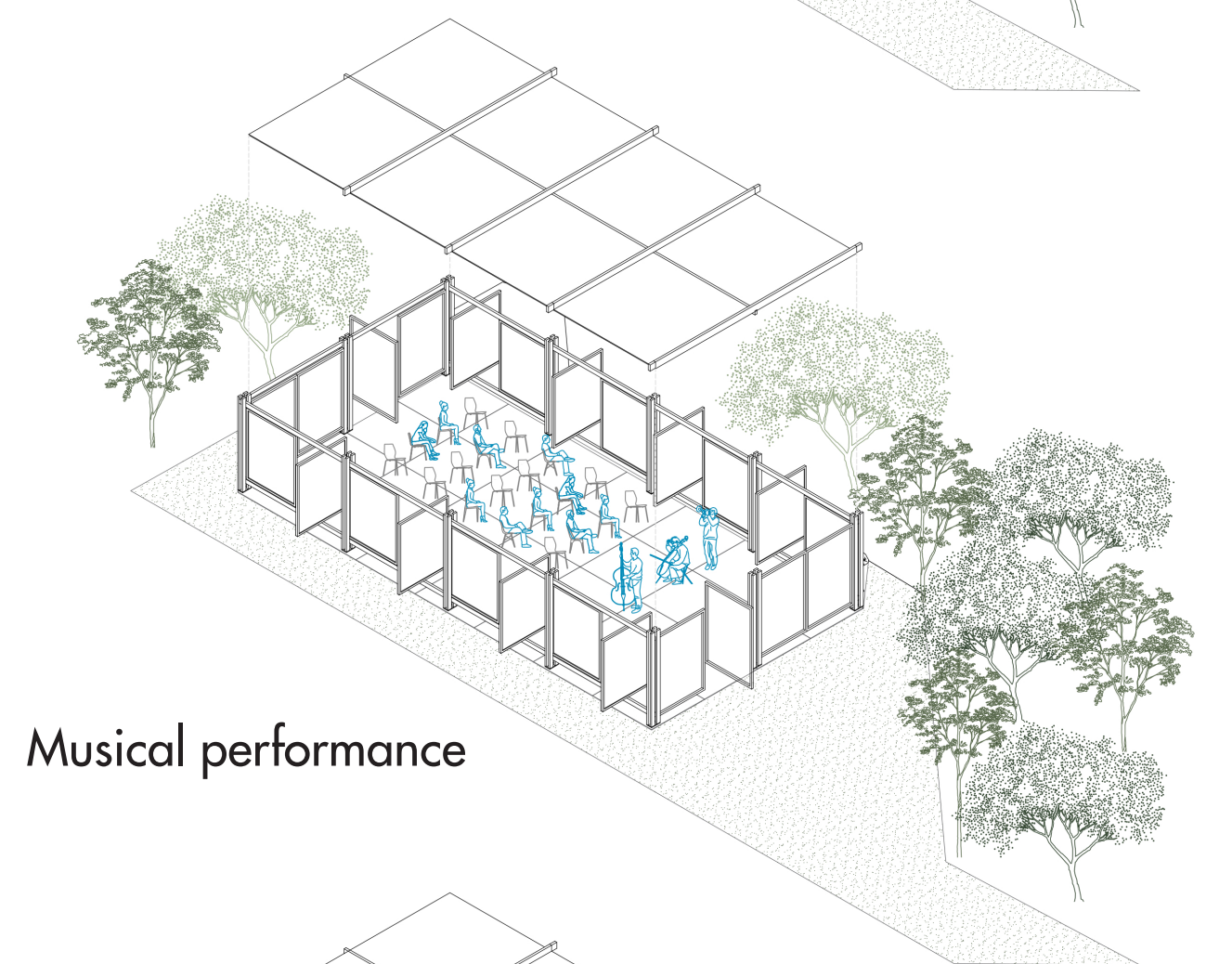
During the day, the translucent panels allow natural light to enter the building, creating a cozy atmosphere for yoga classes, pilates, exhibitions and other activities suggested by the community. Furthermore, when there is a party or exhibition, the panels can be opened, expanding the event to the external environment.

The main structure of the building is made of reforested wood, a sustainable and renewable material, which, during growth, absorbs carbon dioxide and generates less residues during construction phase. The panels are made of polycarbonate plate, a resistant and translucent material. The pavilion has a neutral color palette, so that the colors of the works of art, interventions of the artists, or even the lights of the building take on a main role. Therefore, the new Tottenham Pavilion is formed through the union between the architect's project and the interventions of locals, resulting in a pavilion of the local community.

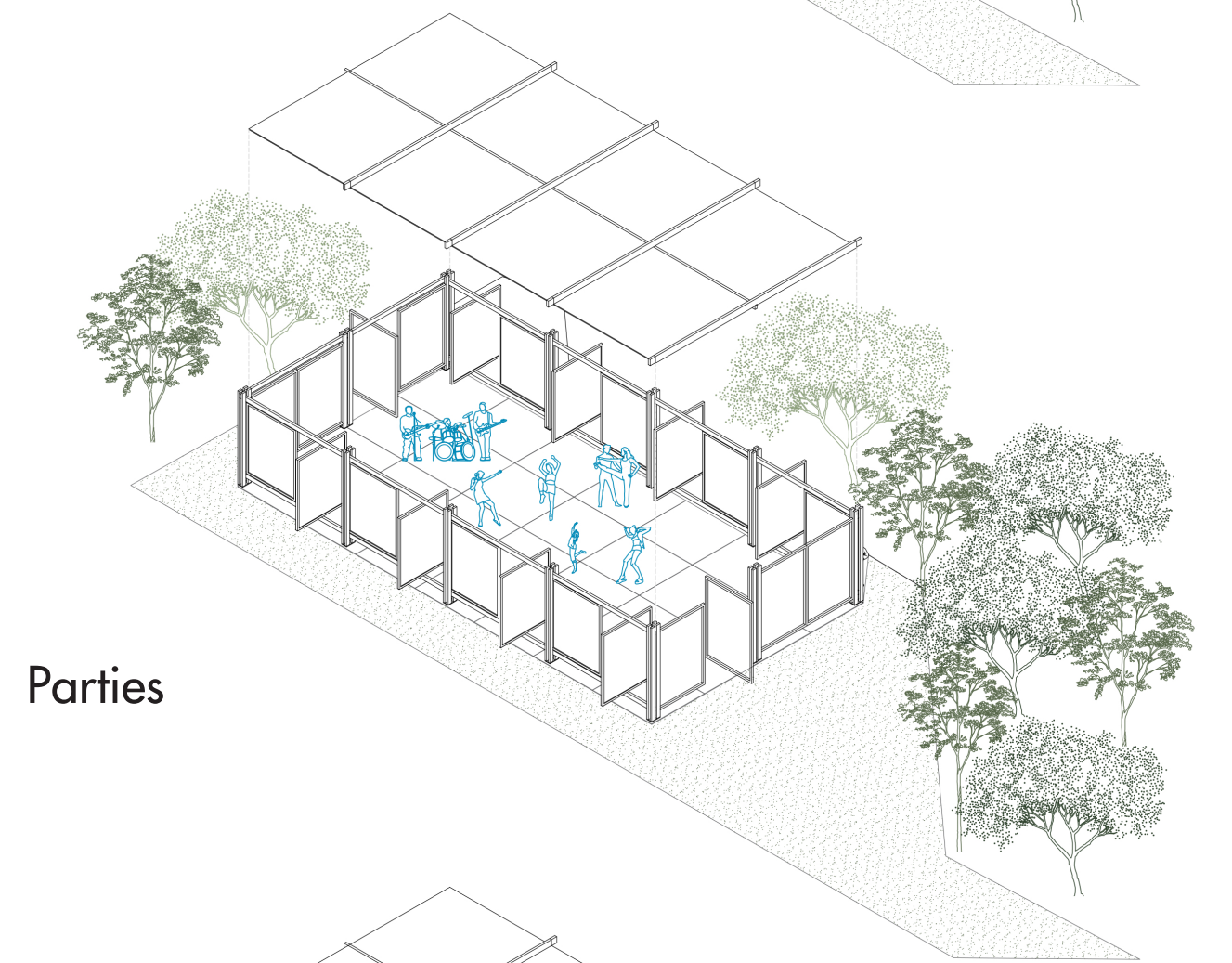
Isometrics: multiple possible uses by the community



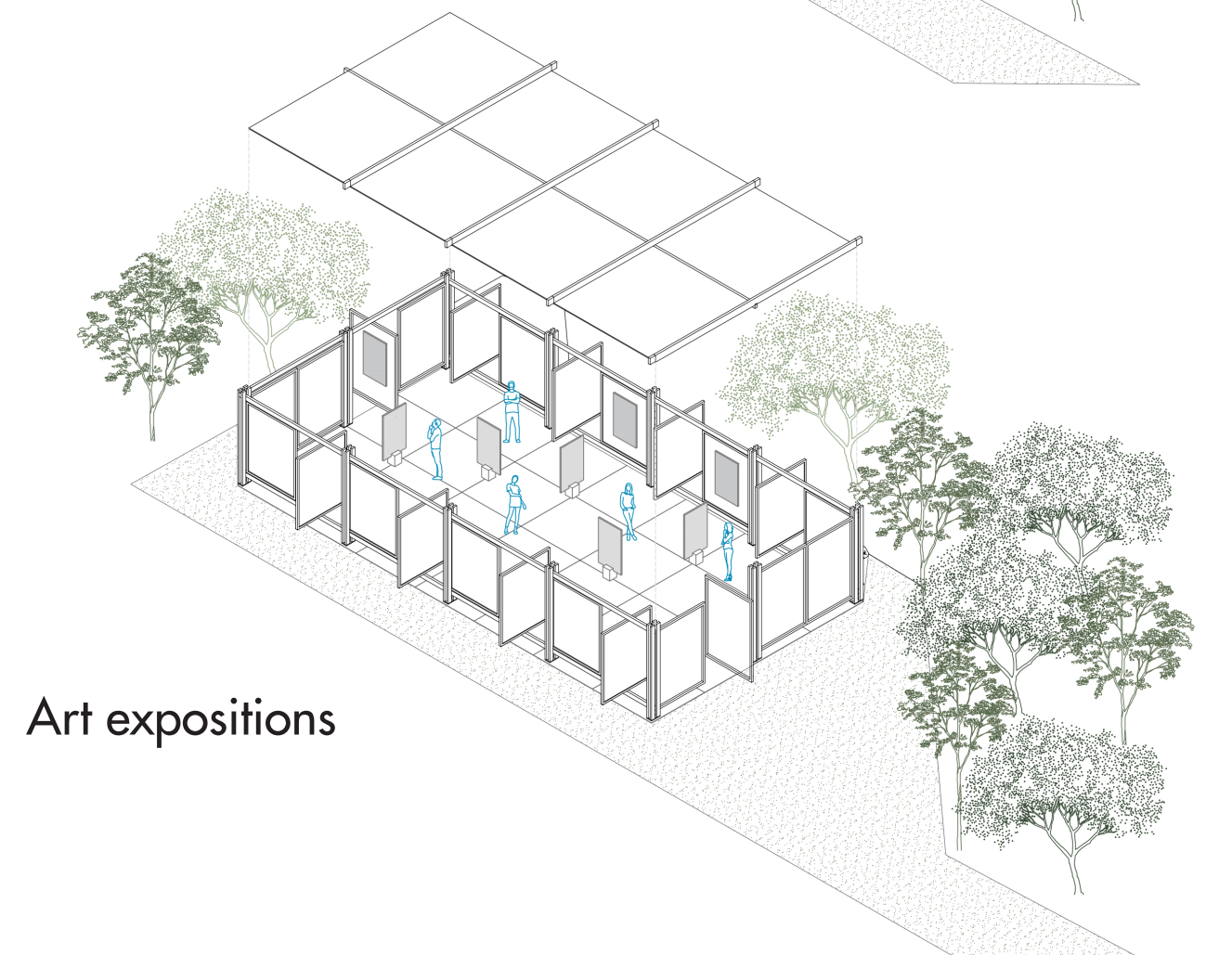
Pilates | Yoga Classes



Musical performance



Parties



Art exhibitions



Internal view: exposition during daylight



Front view: exposition during daylight