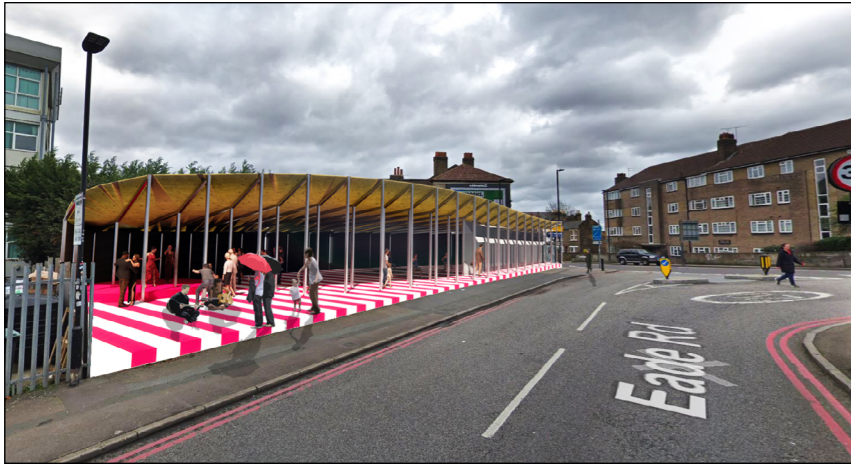
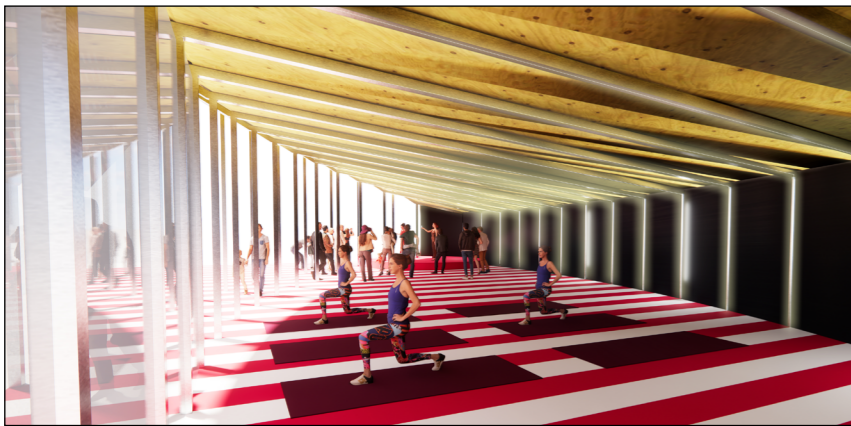


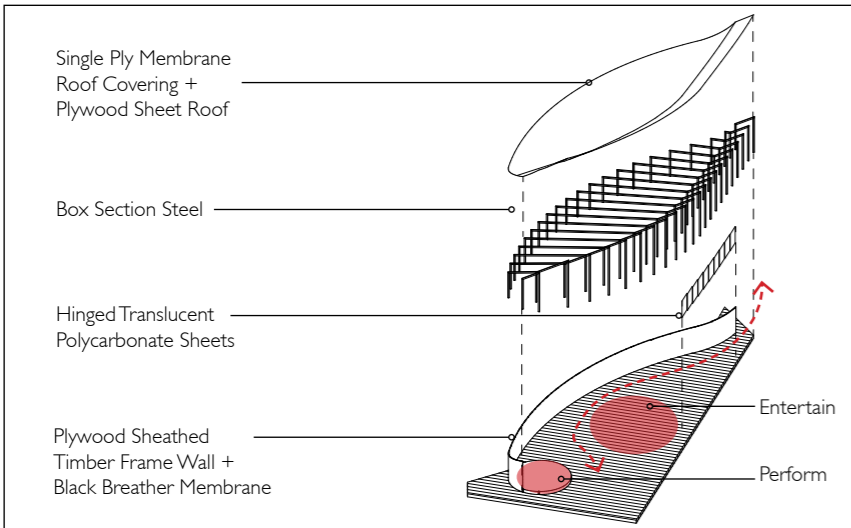
The Parlour



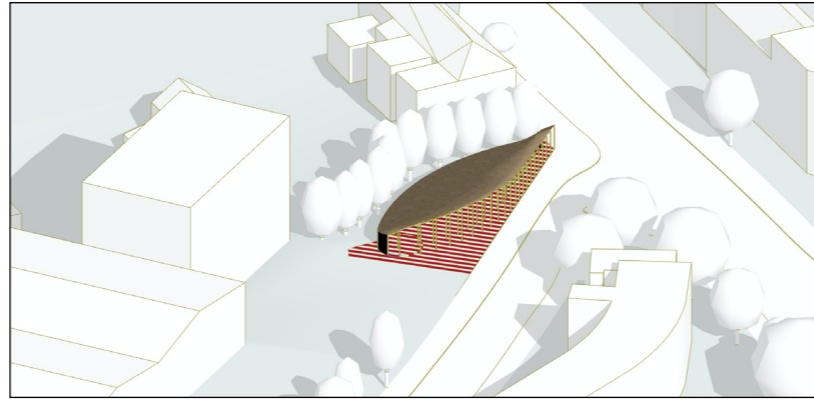
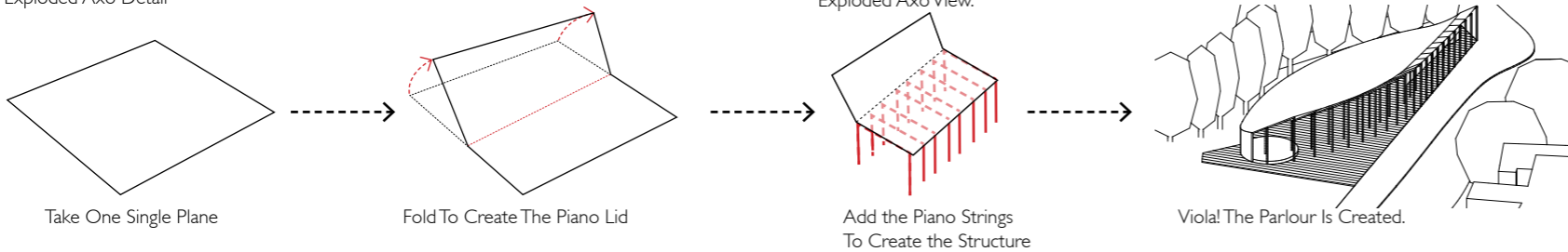
View of The Performance Space From Eade Road



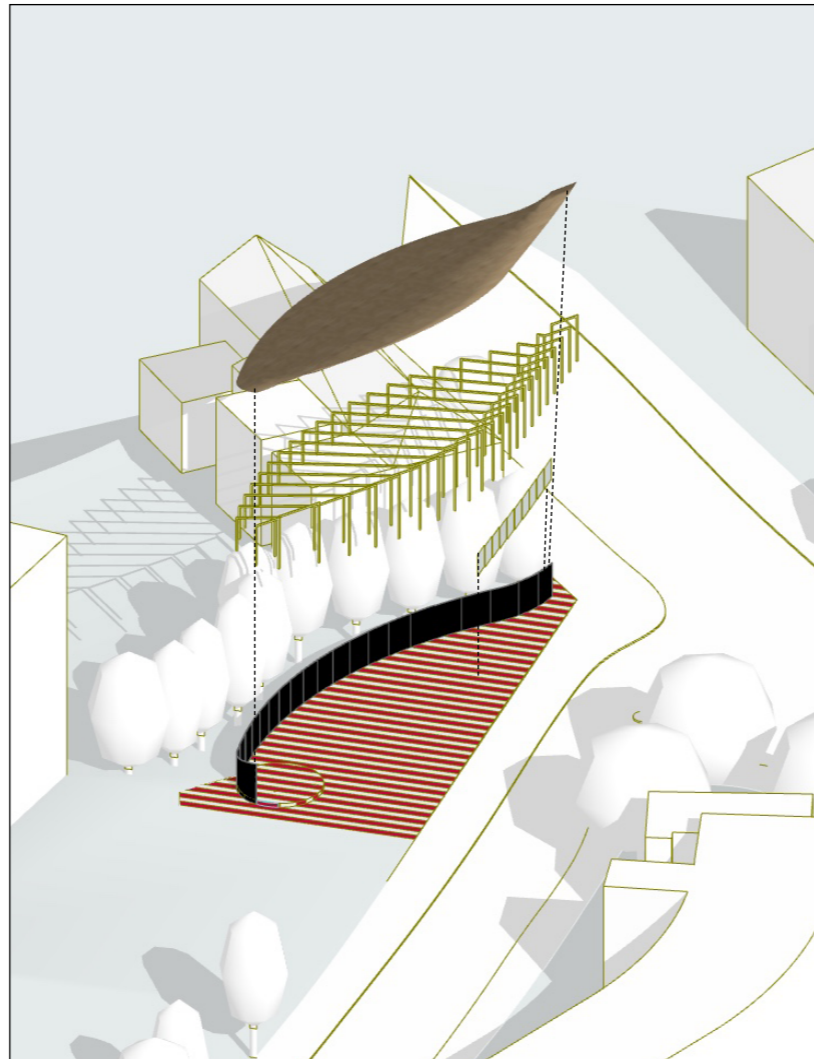
Flexible Space



Exploded Axo Detail

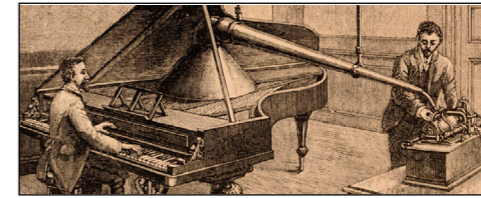


Axo Plan View



Exploded Axo View.

Harringay Warehouse District



Former Industries

- Piano Manufacturing
- Confectionary (Maynards)
- Furniture Making
- Paper Tableware
- Printing Ink
- Radio Valves
- Shaving Brushes
- Early Photographic Slides
- Shoes

The Harringay Warehouse District developed in the early part of the twentieth century as one of the UK's main centres of piano manufacture. Some of the best piano makers anywhere in the country could be found in this industrial heartland of Tottenham. With the passage of time larger forms of industry gave way to lighter forms and with that shift has come a diversification of utilisation. In the 1980's and subsequent years creative industries have moved into the former industrial premises creating a vibrant cross fertilisation of ideas and expression.

One of the ways that expression has borne fruit is with small scale record companies and recording studios. In other words there's a rich tapestry of musical history to the area and the transition has been very much away from hierarchical dominant industry towards the empowerment of the individual in personal expression.

Pavilion as typology is undefined. What should or shouldn't be undertaken in a pavilion? The answer is nothing. Pavilion defines a space in a non specific or concrete way and leaves it free to be what the occupier wishes it to be.

The design draws its references from the historical piano industry of the area with its lifted lid and its repetitious structure alluding to piano strings. But the space is all about the way music features in Harringay Warehouse District now.

The plan form seeks to create two spaces that interact. The space at the rear is bounded by vegetation and has inside/outside qualities that allow for views in and a sense of enclosure - somewhere for a chill out. The second space - more forefront, seeks to draw people in from the pavement and allow for performance and energy and interaction.

The structure and form is about the historical grain of this area and the space is about current expression - the two fusing to form a lively and exuberant pavilion.

80's Industries

- Light Industry

90's Turn Around

- Creative Industries
- Musicians
- Artists
- Rough Trade Records

WHAT'S NEXT...?

