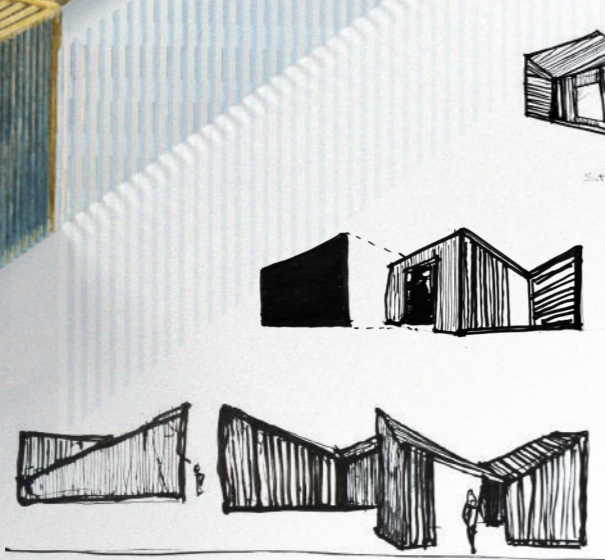


THE SALVAGE YARD

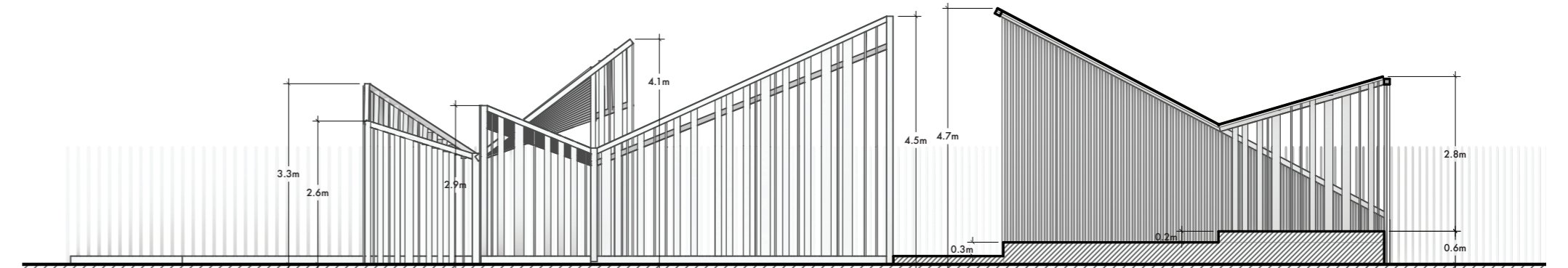
G²J DESIGN

Determined to create a space that encouraged the same sense of diverse and dynamic community prevalent locally, we have taken many cues from the local area. Materially, we draw on items that are seen readily throughout the district, both in interior and exterior spaces, here we have reimaged them in a new form. Everything will be salvagable, everything will go back to the community. Architecturally, Overbury Road was our focal point with the strong apexes in repetitive formation. However, interpreting this in a different manner, we have inverted the pitch and giving each structure a different height and angle; symbolising how no warehouse is the same. Presenting the entrance as a grand reveal, creating an object of curiosity, will hopefully draw in some of the 1.6 million daily passers by who would not otherwise experience and engage with warehouse communities. Applying our central corridor concept to design, has resulted in highly a dynamic space which people could flow freely between. Each space within the pavilion is an extension of the next, whilst also retaining the option of privacy where necessary. Combining all these elements we have created a space that embodies warehouse lifestyle and one that will be enjoyed by many who would otherwise not.

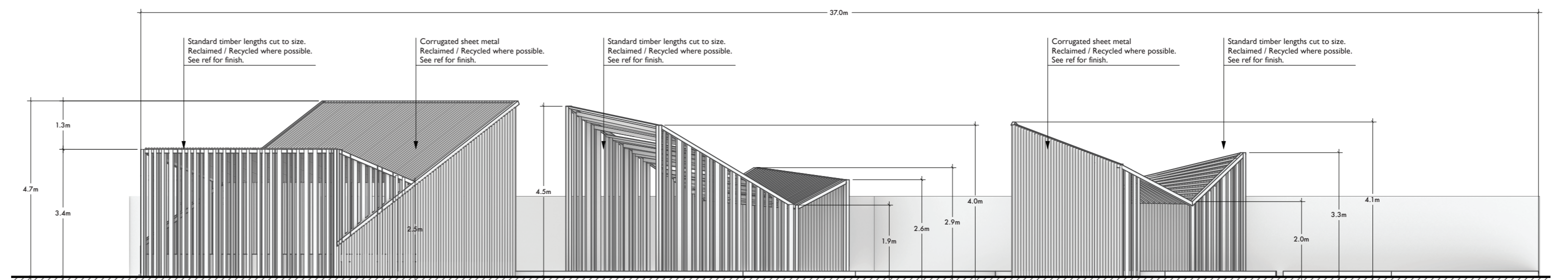


CONCEPT SKETCHES

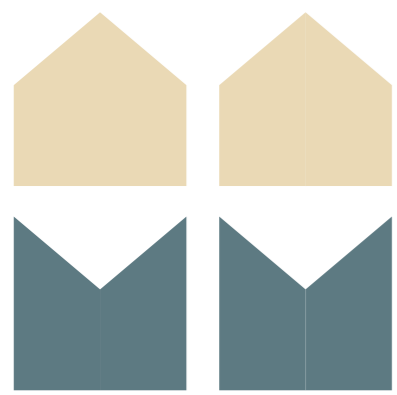
MATERIAL REFERENCES



TOTTENHAM PAVILION - SECTION BB - 1:100



TOTTENHAM PAVILION - FRONT ELEVATION AA - 1:100



Upon exploring Harringay Warehouse district, the iconic repetitive apex roof pitches down Overbury Road left a lasting impression. We sought to pay homage to this vibrant road by inverting the pitch

INVERTED PITCH



Warehouses are enormous spaces internally, however often concealed by tiny doors. Raising huge sense of intrigue and curiosity. Thus we created an entrance within an entrance for our pavilion to replicate this sense of allure.

EXPANSIVE OPENING



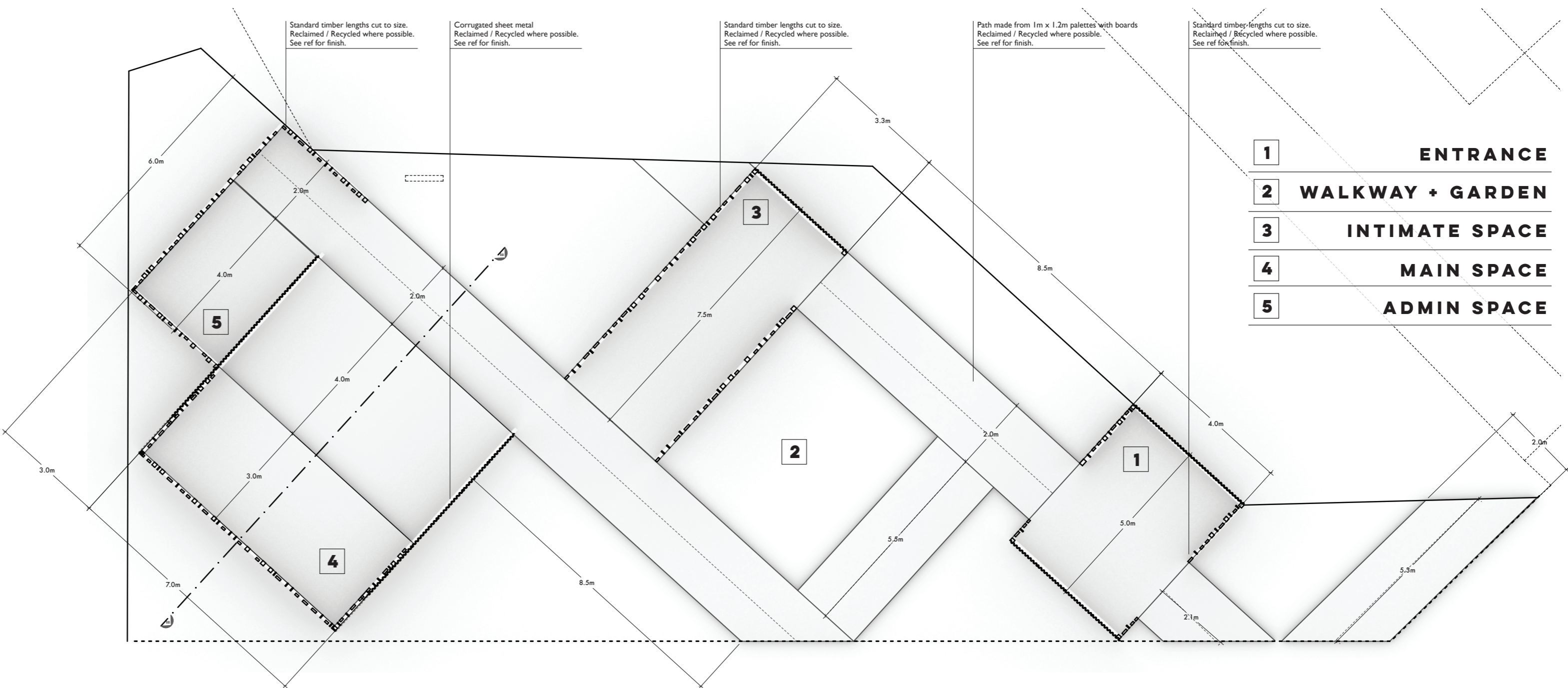
The concept of a centralised corridor between interlinked domestic spaces, something highlighted by many residents on our visit was intriguing. Applying this to our pavilion design created a highly dynamic space which people could flow freely between.

CENTRAL CORRIDOR



Reusing, reclaiming, recycling and rebuilding were words used in abundance during the visit. Thus our proposal in entirety will be made available to the warehouse residents after the project closes. Ready to be reimaged however seen best within the community.

COMMUNITY MATERIALS



- 1 ENTRANCE
- 2 WALKWAY + GARDEN
- 3 INTIMATE SPACE
- 4 MAIN SPACE
- 5 ADMIN SPACE

TOTTENHAM PAVILION - CUT PLAN - 1:100

