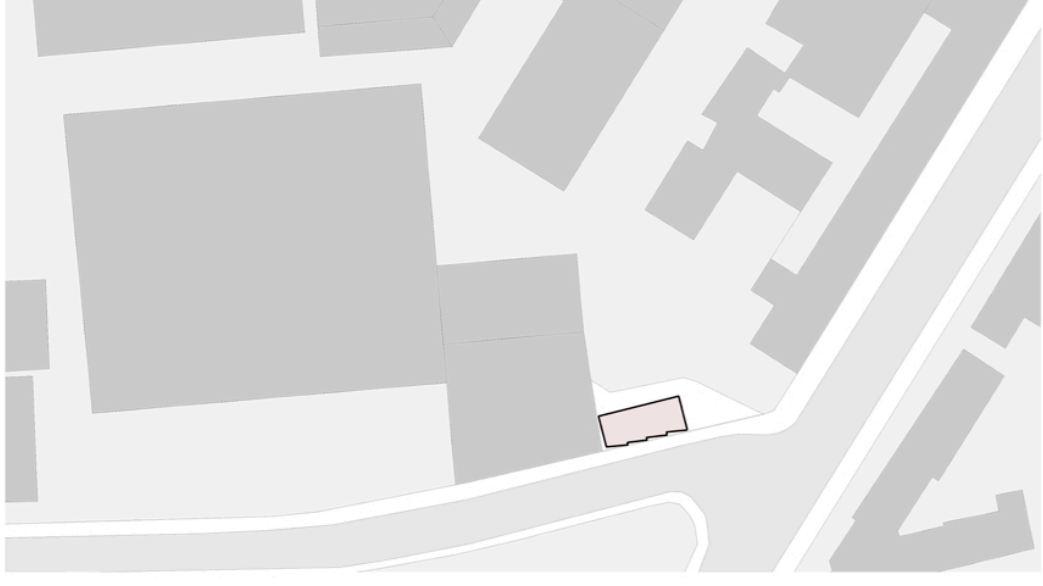


TOTTENHAM PAVILION

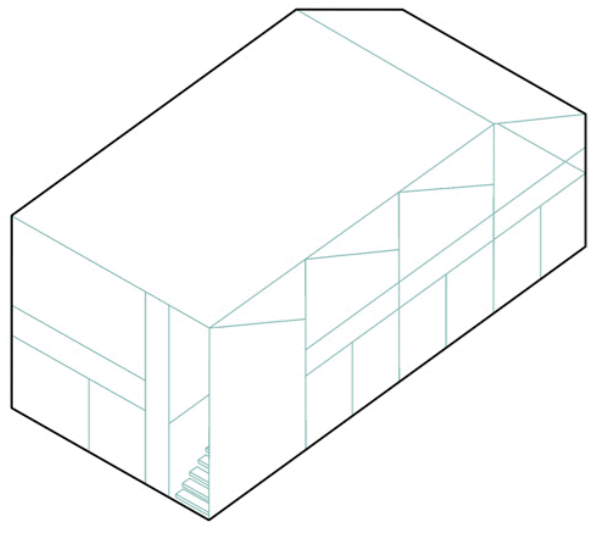


MASTER PLAN

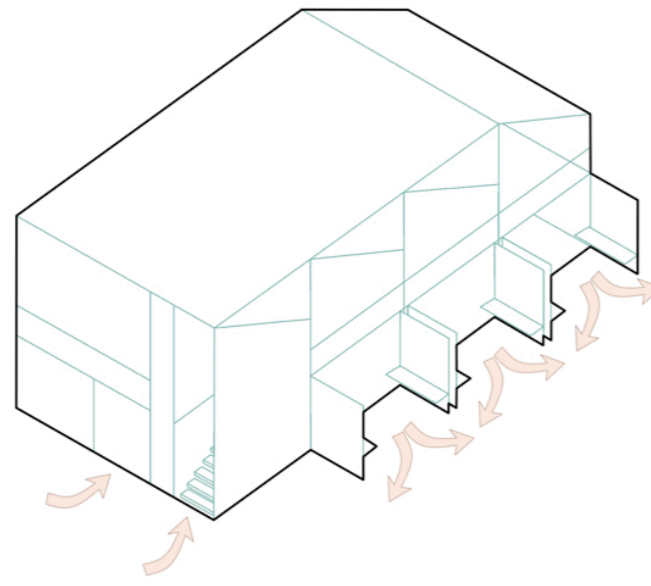


LOCAL INSPIRATION

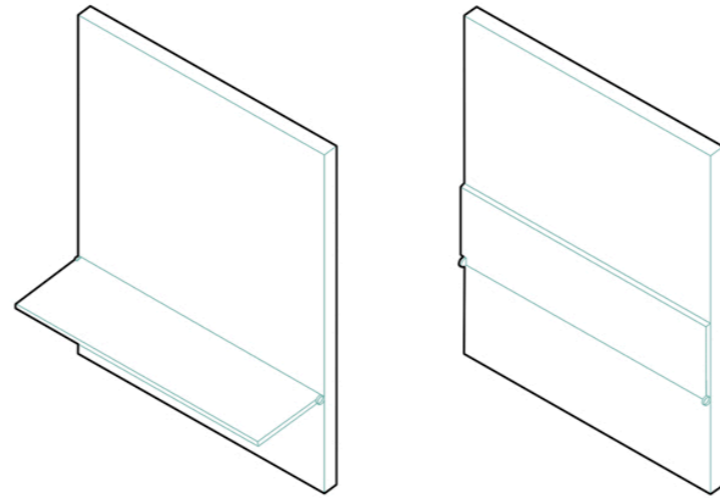
THE TOTTENHAM PAVILION CONTINUES THE TRADITION OF INDUSTRIAL ARCHITECTURE AND EMPHASIZES THE IDENTITY OF THE PLACE IN A CONCISE AND SIMPLE FORM. THE MAIN POINTS THAT THE PROJECT INCLUDES ARE THE SIMPLICITY OF CONSTRUCTION, MULTIPLE USE OF CASES AND A FREE LAYOUT, THAT ALLOWS A VARIETY OF USES OF A SPACE. THERE IS A PRIVATE AREA THAT CONNECTS THE COURTYARD WITH THE INTERNAL SPACE, BY OPENING THE DOORS TO THE COURTYARD. THE SECOND FLOOR IS WELL SUITED FOR ALL KINDS OF ACTIVITIES IN GOOD WEATHER, PHOTO SHOOTS AND SPORTS, AS WELL AS JUST RELAXING ON THE FRESH AIR. THE ABILITY OF CLOSING THE PAVILION, ALLOWS YOU TO SECURE THE INTERIOR. THE MAIN MATERIAL IS WOOD, AS WELL AS POLYCARBONATE FOR WINDOWS. BY INDICATING THE VALUE OF TIME IN THE TITLE, I WOULD LIKE TO NOTICE THAT THIS PAVILION WILL BE IN USE FOR A LIMITED AMOUNT OF TIME, BUT ITS IMPACT ON THE COMMUNITY IS TREMENDOUS. IT WILL FURTHER PROVOKE THE CREATION OF NEW SOCIAL TIES, WILL STRENGTHEN EXISTING ONES, AND, GENERALLY, BECOME AN EXCELLENT TOOL FOR BRINGING PEOPLE TOGETHER TO ACHIEVE COMMON GOALS.



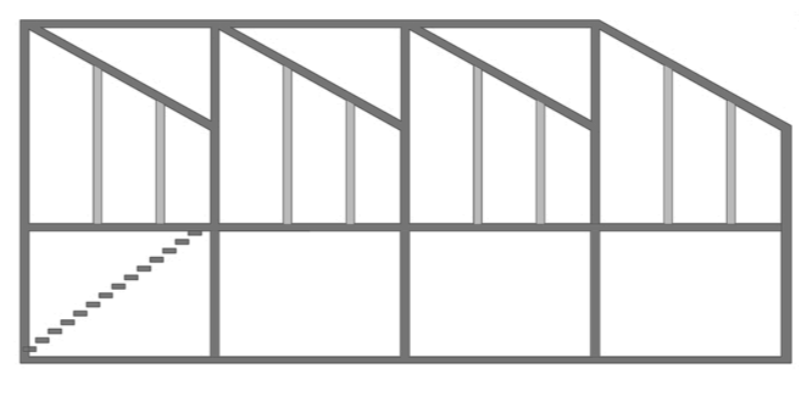
PRIVATE SPACE
LECTURES, FILM SCREENINGS,
WORKSHOPS



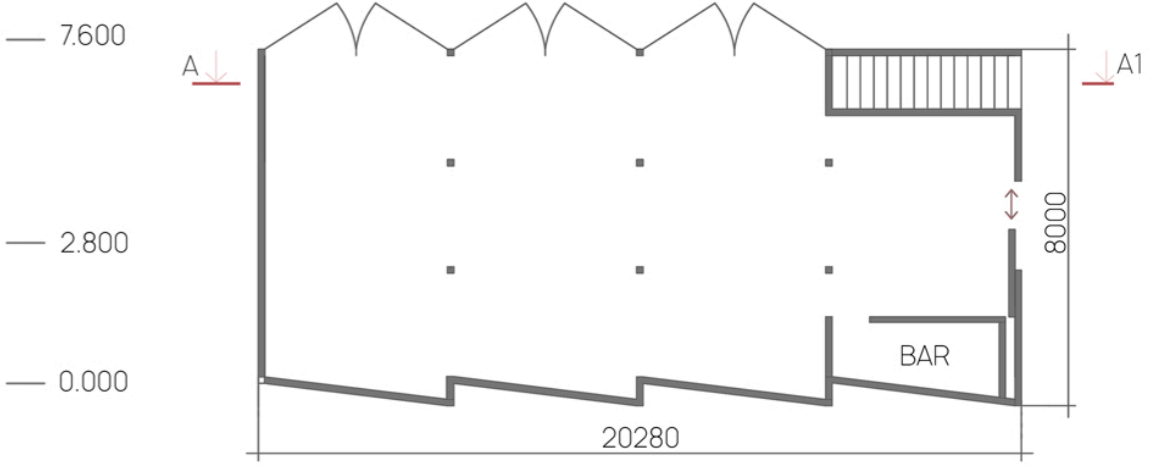
PUBLIC SPACE
PARTIES, MARKETS, WORKSHOPS



DOOR CONSTRUCTION
BUILT-IN TABLES SAVE SPACE AND
MAKE SPACE MORE FLEXIBLE



SECTION A-A1



PLAN 1-1ST FLOOR

