

Tottenham Common



Wards Corner (Seven Sisters Indoor Market) has long been a symbolic building of Seven Sisters, marking an important junction for over a century, but lying empty since the 1980s. It is threatened with demolition, to make way for private flats, but the Wards Corner Community Plan will refurbish the corner building making space for local events and community organisation. Our proposal for the Tottenham Pavilion will create a replica model of one floor of the Wards Corner building on the site. This room will host events to continue the work we are beginning now with Tottenham in Common: actually existing alternatives to neoliberalism and organising for a new urban politics. Alongside a dynamic series of events, talks, workshops and parties the space will show what could be possible in Tottenham if communities were given more power to self-organise.

The Corner building is to be marked out by red PVC industrial curtains, creating a soft outline to the space to allow for flexible programming of the space. The site is then wrapped in a taller line of frosted PVC industrial curtains. These blur and obscure the activity happening within, giving privacy to the interior and creating intrigue from the street. The curtains can be fixed or opened as needed, allowing the pavilion to be entered from one single point for a timed event like a talk or opened up completely to the street for markets or workshops.

The curtains are to be hung from a standard scaffolding structure (which could be replaced with a timber structure if the lifespan of the building and fundraising permits). A corrugated metal roof shelters the interstitial spaces, creating a space of shadow before arriving into the light through the red curtains in the central space. These smaller spaces can be used for events, workshops and market stalls, while the central space acts like a town square or village common. Large enough to hold concerts, talks and fairs. The pavilion steps up at Seven Sisters Road to make the site visible when approaching on the main road, marking what has always been a boundary following the New River, from residential to industrial, Hackney to Haringey.



Market unit at Seven Sister's Indoor market, a supermarket by day



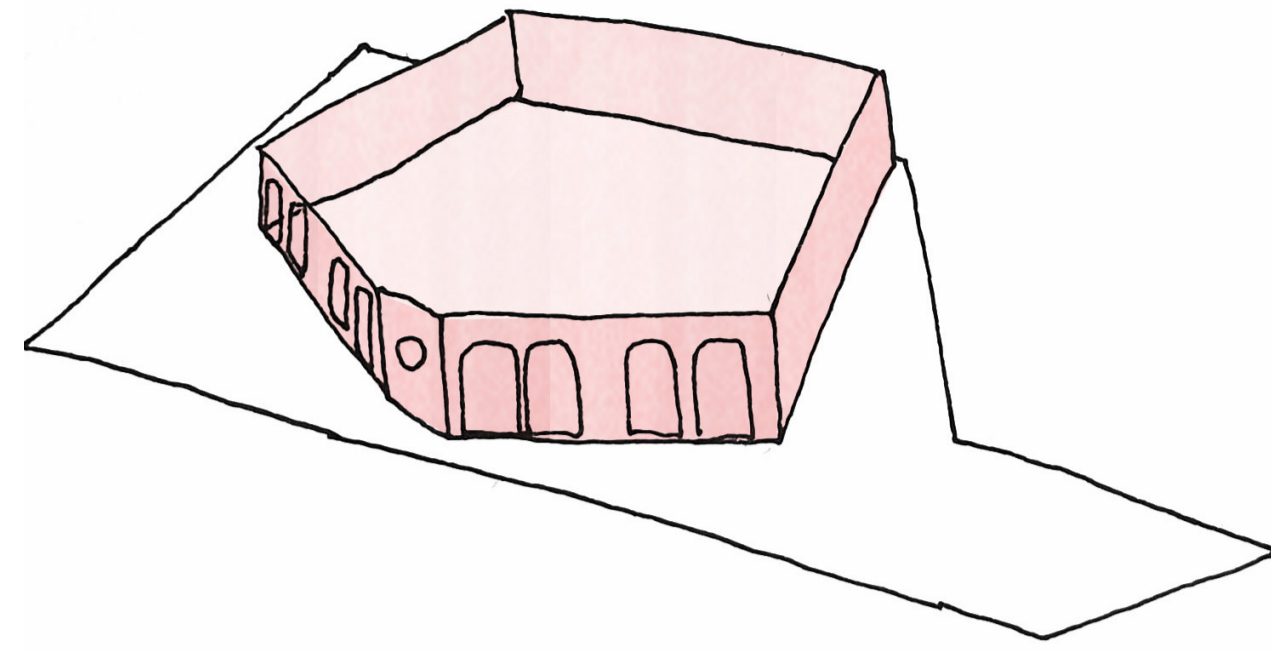
By night the shop transforms to a restaurant and bar with salsa dancing



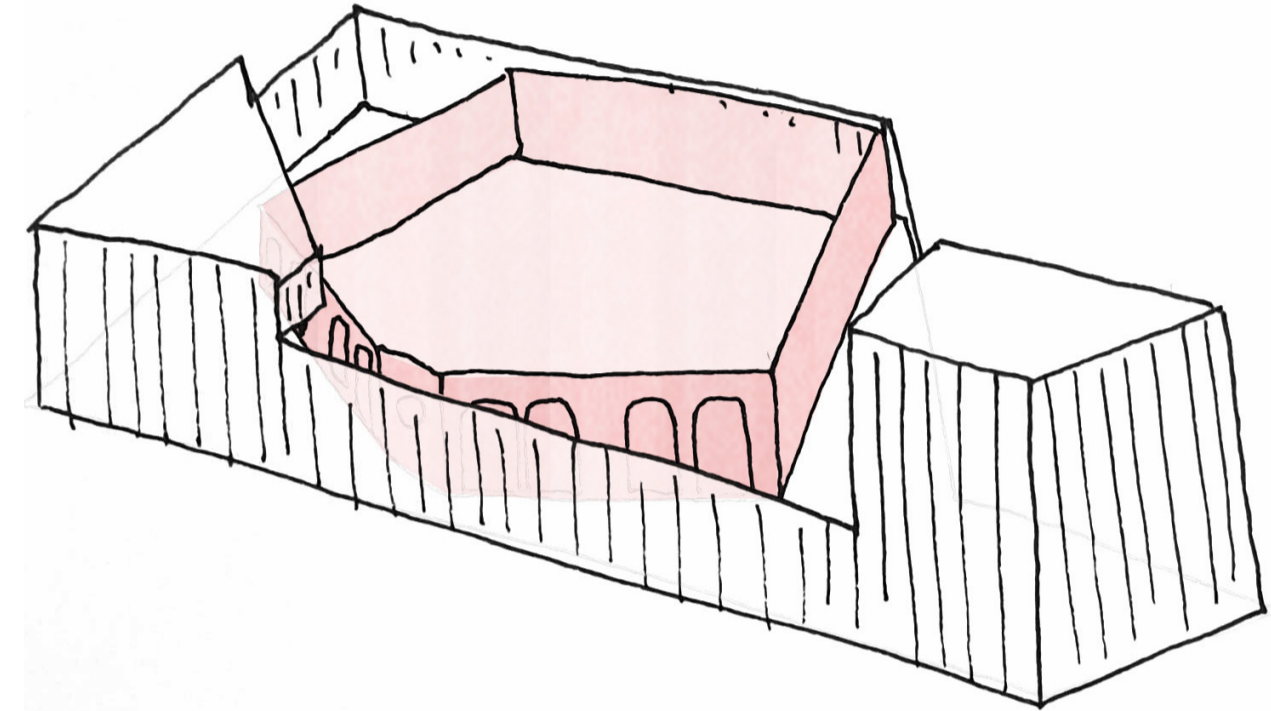
The elegant corner building has been left vacant since the 1980s



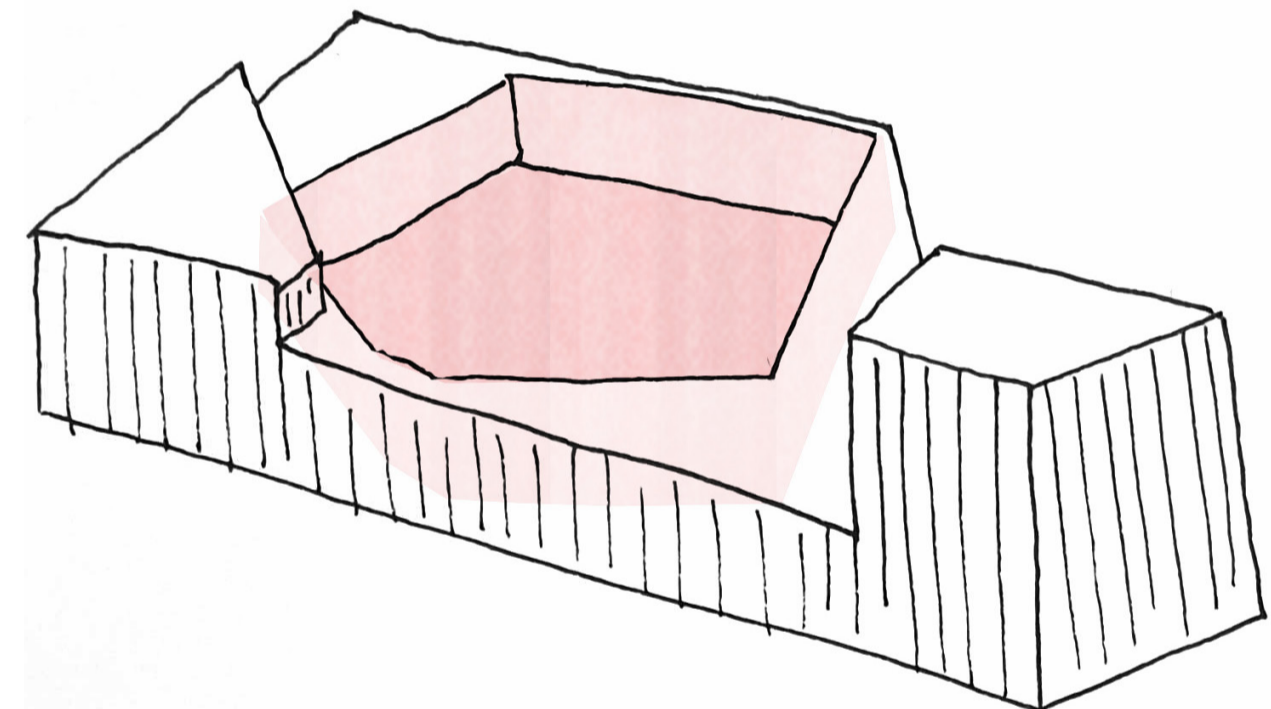
The Wards Corner Community Plan will bring back community uses to this landmark of Seven Sisters



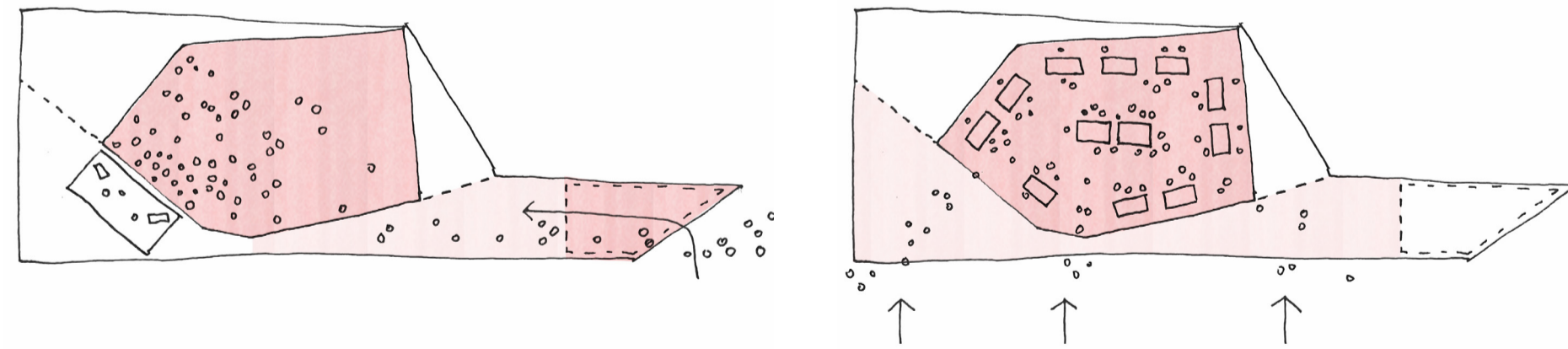
The footprint of the Wards Corner building sits perfectly on the site, creating a 1:1 model of a future Seven Sisters, where community-led development has become the norm



The site is then wrapped in a frosted PVC industrial curtain to obscure the object within and creating a theatrical promenade to entering the site

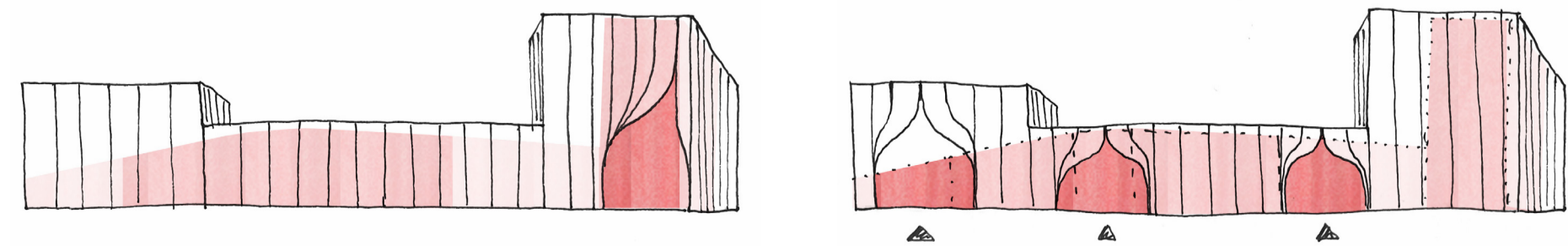


The Corner building becomes a void for holding events to grow the Tottenham model, to build participation in community planning and champion alternative methods of development



For events, music and talks the central hall creates an enclosed and dynamic space, with a single point of entrance

For markets or fairs the whole building can open to the street allowing people to wander through



The corner on the main road opens, signalling the event inside

The curtain provides flexibility in where entrances are placed



The inner red events space glows when illuminated at night, but blurred and softened by the outer skin. Where the curtain lifts open the bright colour is revealed to the street



Red PVC curtains create a warm and inviting interior space



Frosted PVC creates privacy by softening and blurring outlines



The pavilion steps up to mark the entrance to the Haringey Warehouse District