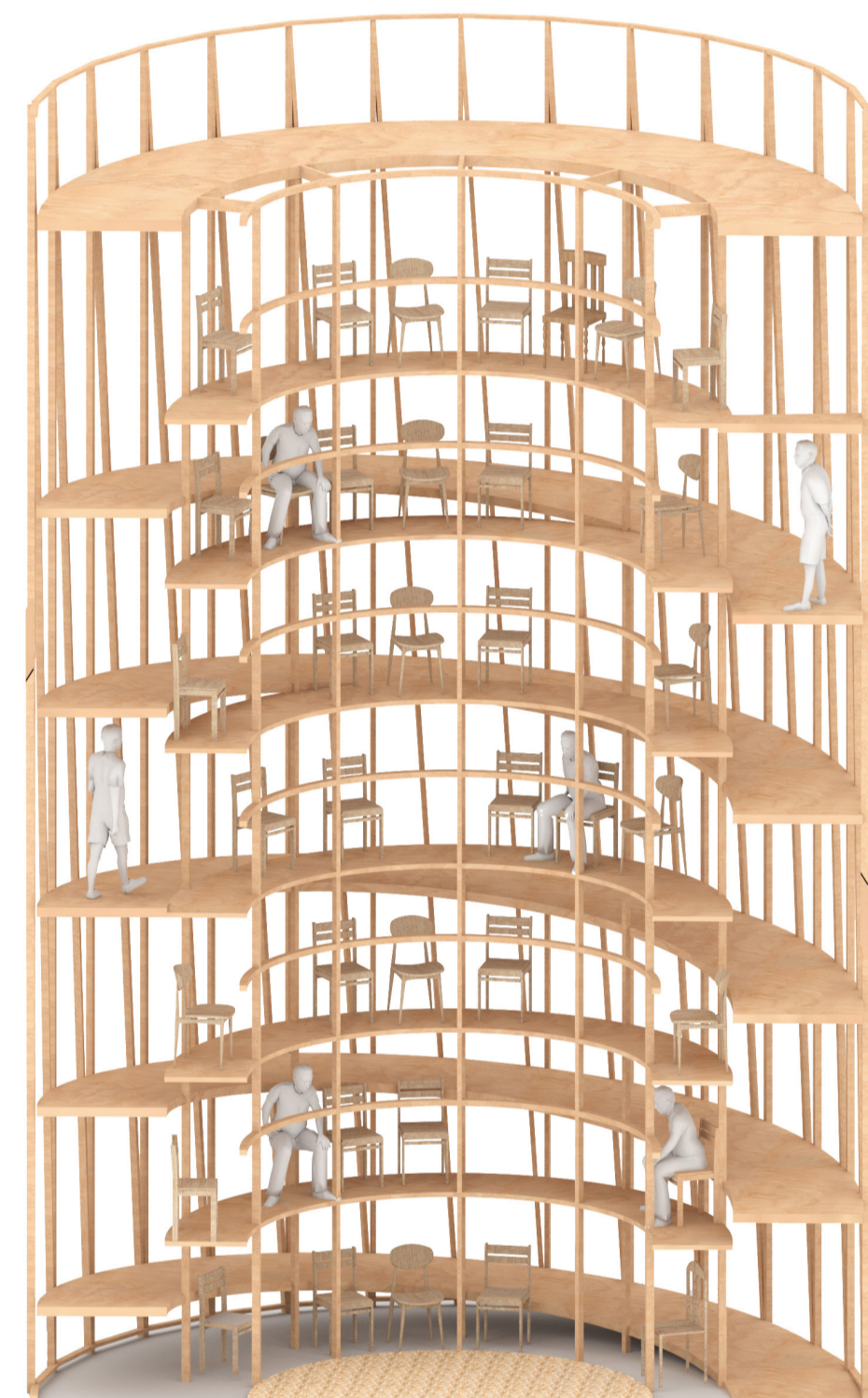
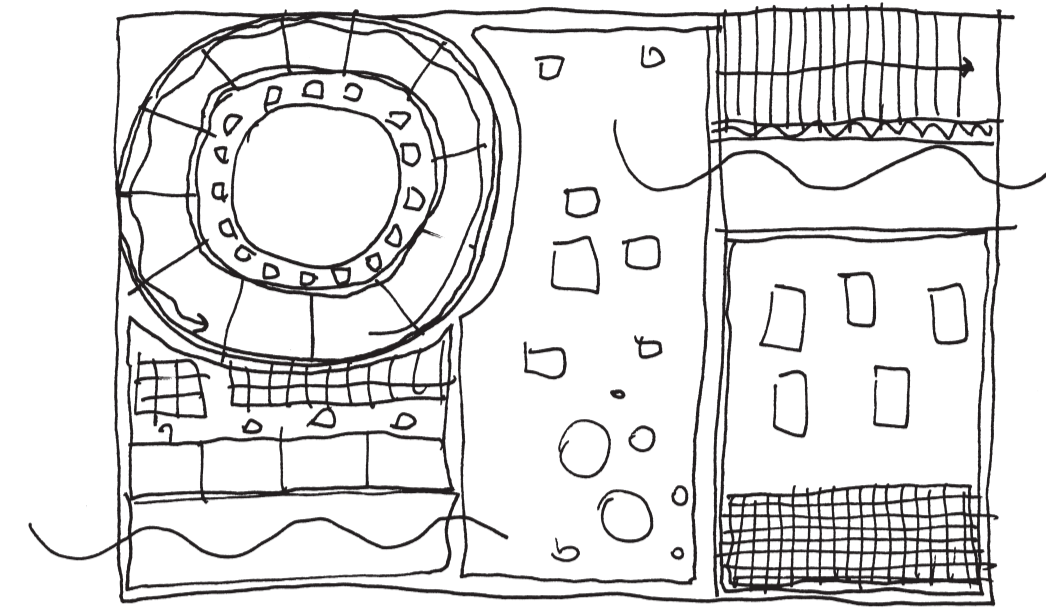
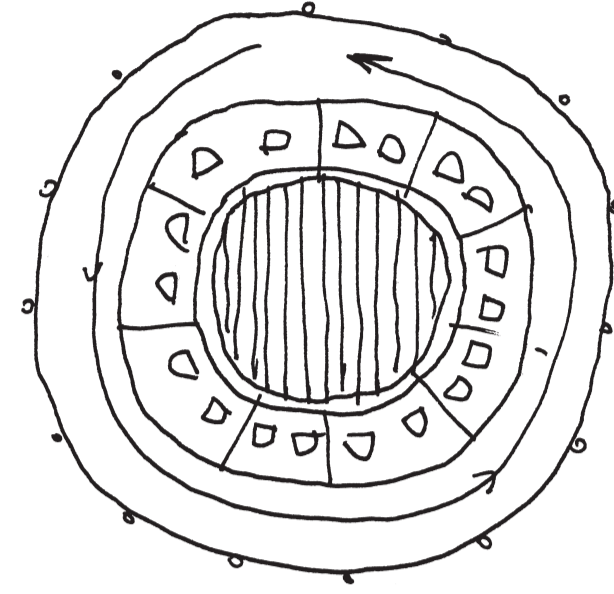
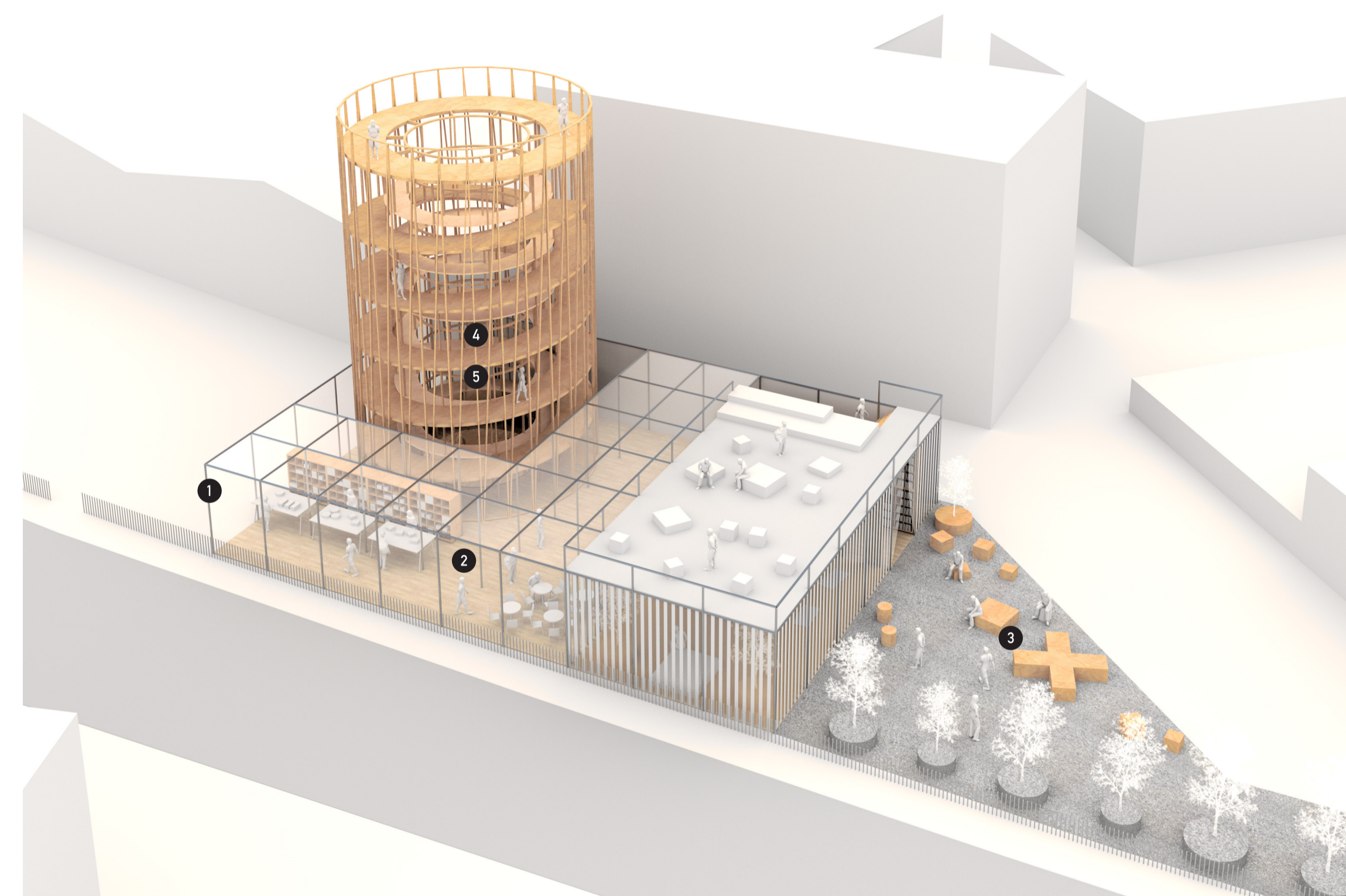
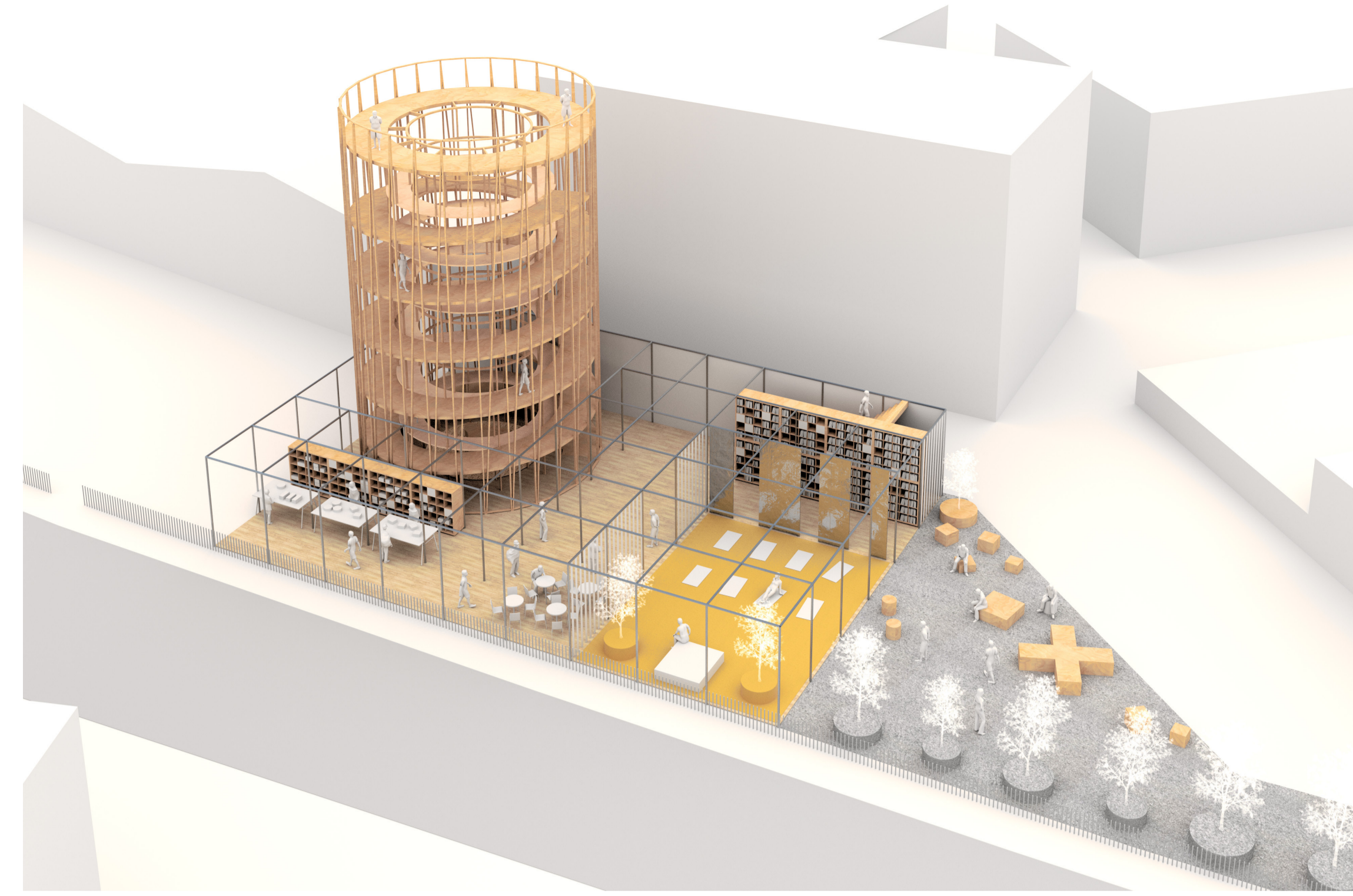
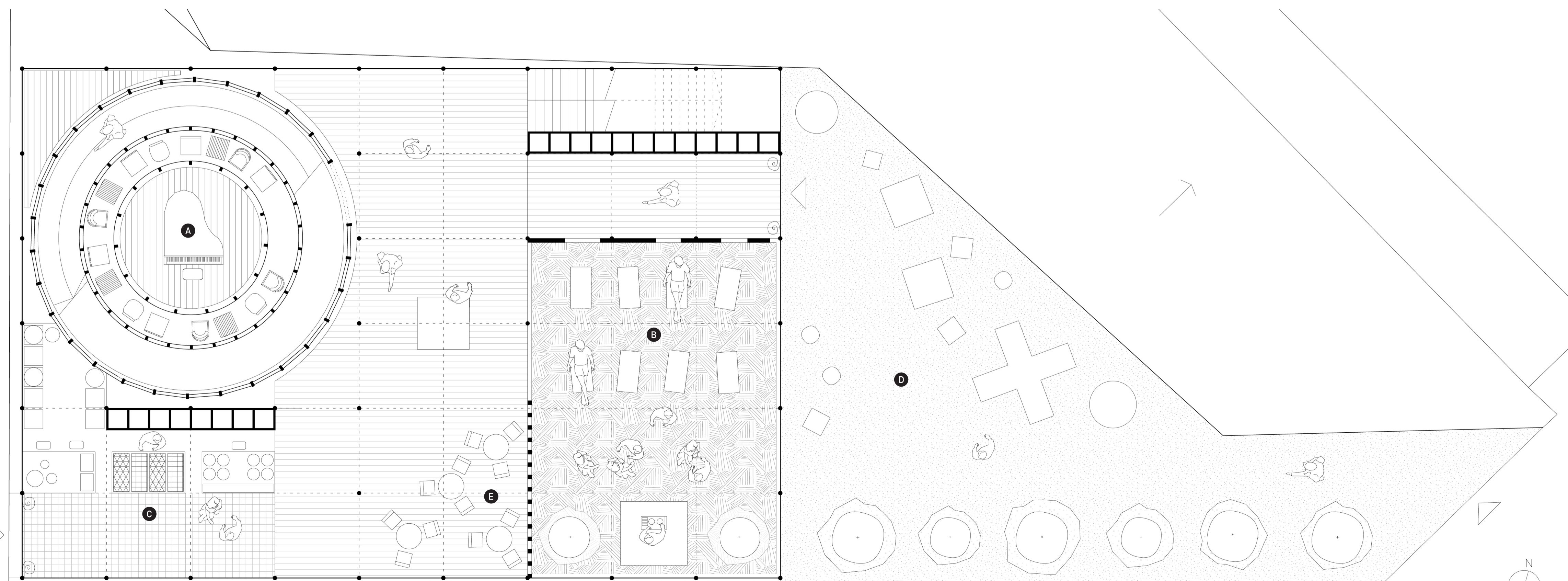


tottenham pavilion: the well

The project concerns the creation of a compact pavilion in the post-industrial Harringay Warehouse District. Its form and materials refer to the character of the area. The main part of the structure is a 12-meter-high tower that hosts concerts, lectures and meetings for a relatively large audience considering the area it occupies. Furthermore, it allows visitors to observe the district from the view terrace located on the top-level. In addition, the pavilion includes a dance and sports zone, a small market with local products and several recreational places. Usage of recycled and possibly rented materials significantly reduces the costs of the pavilion.



-  1. rental scaffolding as the main structure
-  2. textile scaffolding cover
-  3. recycled crates and boxes as tree pots and furniture
-  4. recycled chairs for the tower audience
-  5. recycled wooden planks



A. show, lecture, talk space B. dance, yoga, party space C. small market space D. entrance zone, recreational area E. relax, food area

0m 1 2 3 4 5

